

Philips Azur 8000 Series  
Steam Iron

### 3000 W Power

No burns guaranteed  
SteamGlide Elite soleplate  
55 g/min continuous steam



DST8020/26

## Perfect results in no time

### No settings, no hassle

Iron hassle-free with our new Philips Azur 8000 Series. Get started in no time with 3000 W for quick heat up and powerful performance. Our OptimalTEMP technology guarantees no burns on any ironable fabrics for your peace of mind.

#### Tackle any crease fast

- 3000 W for quick heat-up and powerful performance
- Up to 55g/min of strong continuous steam output
- 240g steam boost tackles even the most stubborn creases

#### Easy every day

- One optimal temperature setting, for no burns guaranteed
- SteamGlide Elite soleplate for ultimate gliding & durability
- Vertical steaming for hanging fabrics

#### Iron on and on

- Iron more in one go with the 300 ml water tank
- Auto shut-off after 8 minutes
- Quick calc release for long lasting performance

# PHILIPS

## Steam Iron

3000 W Power No burns guaranteed, SteamGlide Elite soleplate, 55 g/min continuous steam

DST8020/26

# Highlights

### 3000 W for fast heat up



Get started on your ironing in no time with more power for fast heat-up.

### Continuous steam up to 55g/min



With a continuous steam output of 55g/min, no glide over your garments is wasted so you can remove creases faster.

### Steam boost up to 240g



240g strong steam boost to remove stubborn creases from all your garments.

### No burns guaranteed



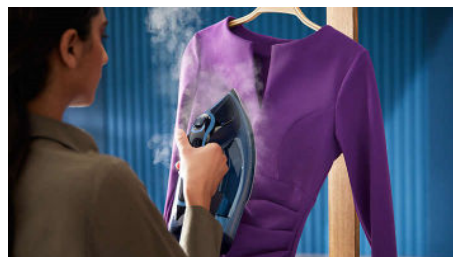
One optimal setting for all ironable fabrics. For no burns, guaranteed. Thanks to OptimalTEMP technology, we guarantee this iron will never cause burns to any ironable fabric and you can iron everything from jeans to silk, from linen to cashmere safely, in any order, without waiting for the temperature to adjust or pre-sorting clothes.

### SteamGlide Elite Soleplate



Smoothly glide over creases with the super-smooth SteamGlide Elite soleplate that is gentle on your clothes. Super-smooth SteamGlide Elite soleplate is durable, scratch-resistant and easy to keep clean.

### Vertical Steam



The vertical steam function lets you refresh garments right on the hanger and remove

creases from curtains as they hang. No ironing board required.

### 300ml Water Tank



Fewer refills are required thanks to a large 300ml water tank. So you can iron more clothes in one go.

### Auto shut-off



To give you peace of mind the steam iron automatically switches itself off after 8 minutes.

### Quick calc release



The quick calc release helps to maintain peak performance by removing calcium build-up or limescale.

# Specifications

## Calc management

- Calc clean solution: Quick Calc Release

## Technical specifications

- Weight of iron: 1.78 kg

## Design

- Color: Light Blue

## Consumer Trade Item

- Height: 17.5
- Width: 13.5
- Length: 33.3
- Net Weight: 1.657
- Gross Weight: 1.916
- GTIN: 8720389004391
- Country of origin: ID

## Outer Carton

- Height: 37.2
- Width: 29.4
- Length: 35
- Net Weight: 6.628
- Gross Weight: 8.591
- GTIN: 18720389004398

## Easy to use

- Water tank capacity: 300 ml
- Soleplate name: SteamGlide Elite Rosecopper

- Drip stop
- Tap water suitable
- Power cord length: 2,5 m
- Drip Stop
- Reaching tricky areas: Pointed tip
- Extra large filling hole
- Auto shut-off
- Vertical steam

## Guarantee

- 2 year worldwide guarantee

## Crease removal

- Reaching tricky areas: Pointed tip

## Fast & powerful crease removal

- Continuous steam output: 55 g/min
- Power: 3000 W
- Vertical steam: g g
- OptimalTEMP technology
- Shot of steam: 240 g
- Turbo steam

## Green efficiency

- User manual: 100% recycled paper

## Scale management

- Descaling and cleaning: Self clean



Issue date 2023-10-20

Version: 7.7.1

EAN: 87 20389 00439 1

© 2023 Koninklijke Philips N.V.  
All Rights reserved.

Specifications are subject to change without notice.  
Trademarks are the property of Koninklijke Philips N.V.  
or their respective owners.

[www.philips.com](http://www.philips.com)