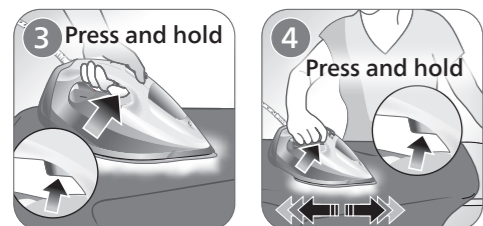
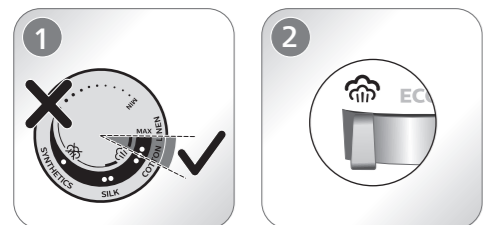
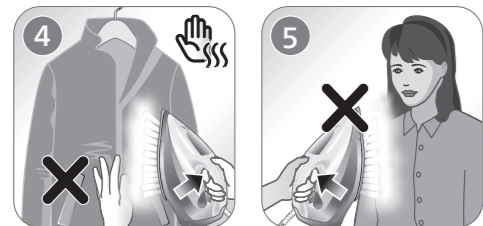
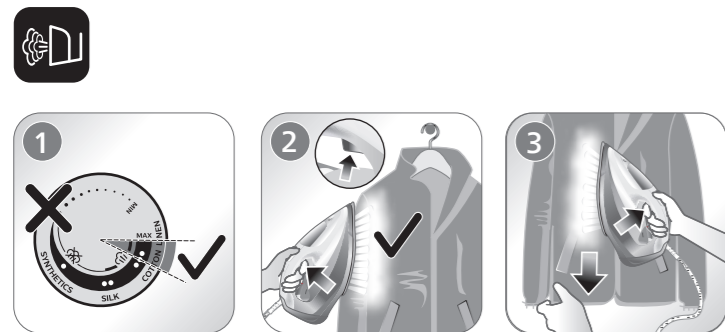


2 

www.philips.com/support

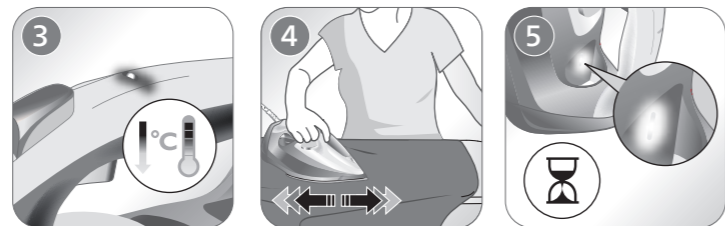
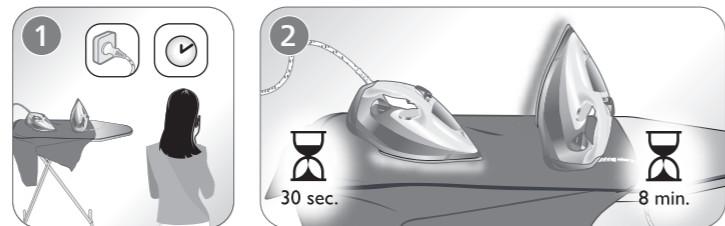


EN Press and hold
FR Maintenir enfoncé
PT Manter premido
AR اضغط باستمرار
FA فشار داده و نگهدارید

3 

DST703X, DST704X
DST705X, DST706X
DST751X

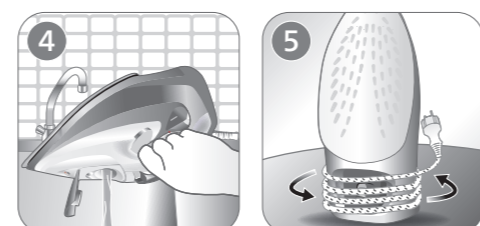
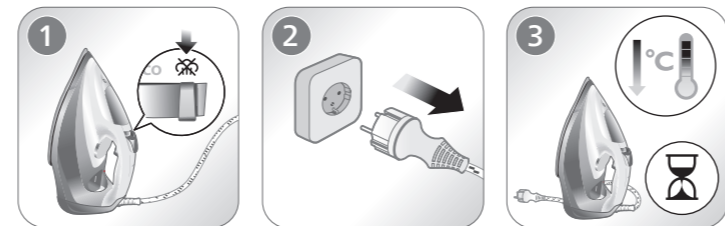
www.philips.com/support



EN Specific types only
FR Certains modèles uniquement
PT Apenas tipos específicos
FA فقط مدل‌های خاص
AR أنواع محددة فقط

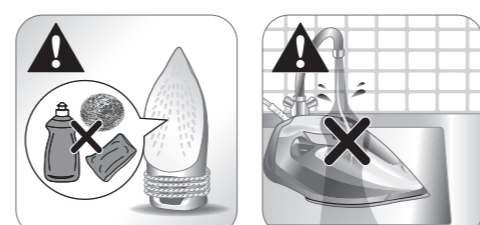
4 

www.philips.com/support



5 

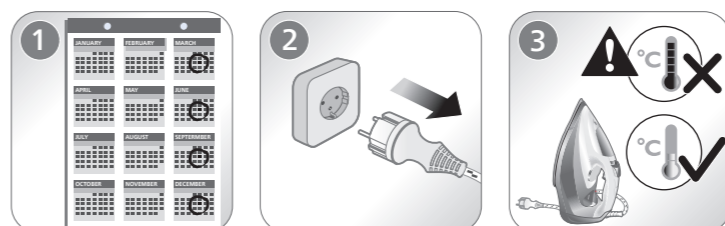
www.philips.com/support



6 

3 months

www.philips.com/support



PHILIPS

DST7011, DST7012
DST7030, DST7040
DST7051, DST7060



EN User manual

FA راهنمای کاربر

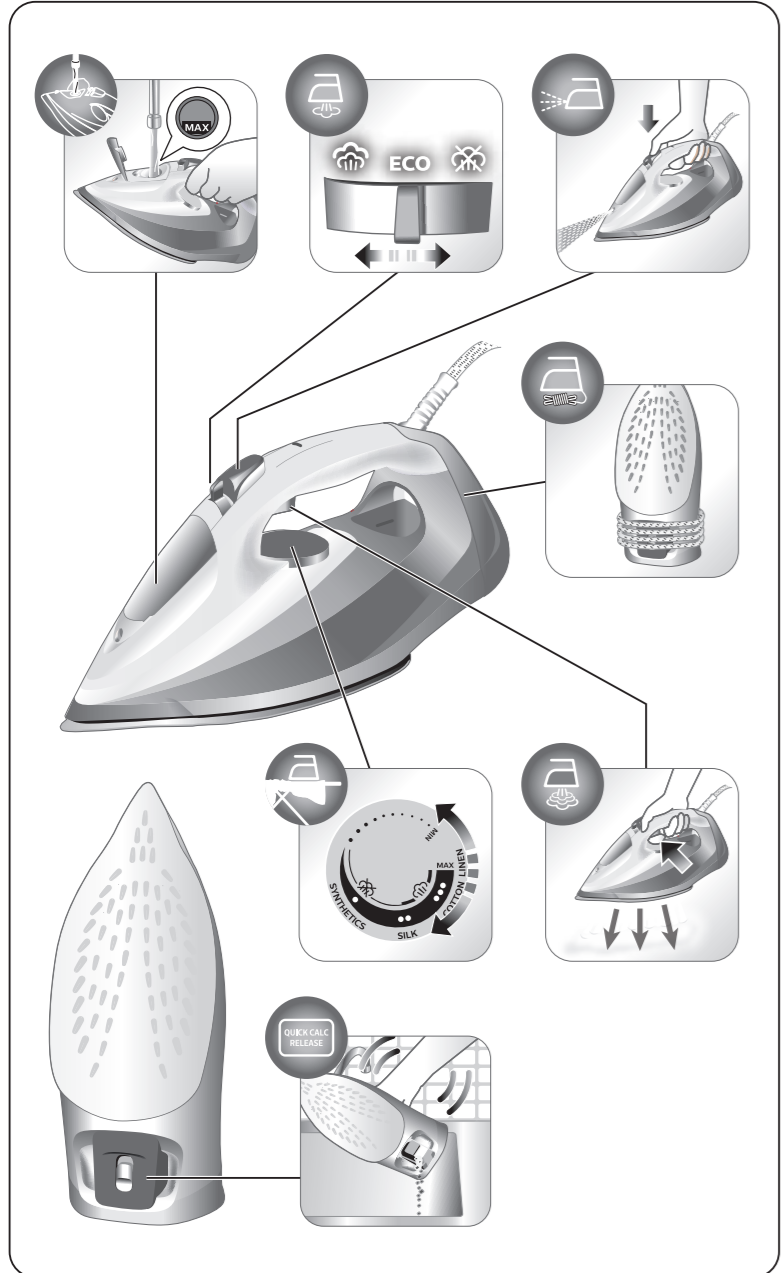
FR Mode d'emploi

AR دليل المستخدم

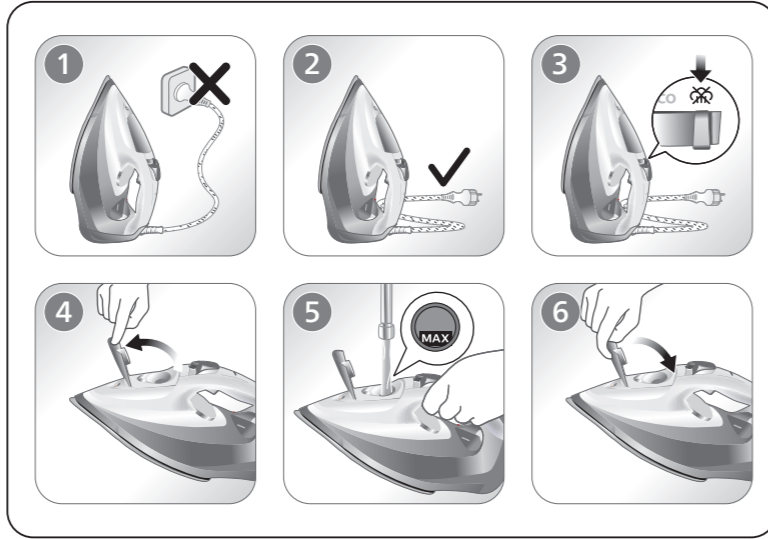
PT Manual do utilizador



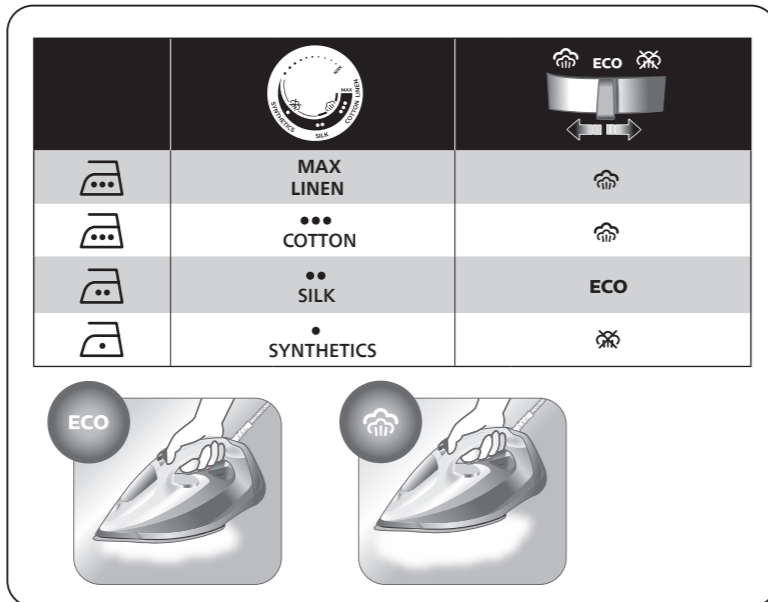
www.philips.com/support



www.philips.com/support



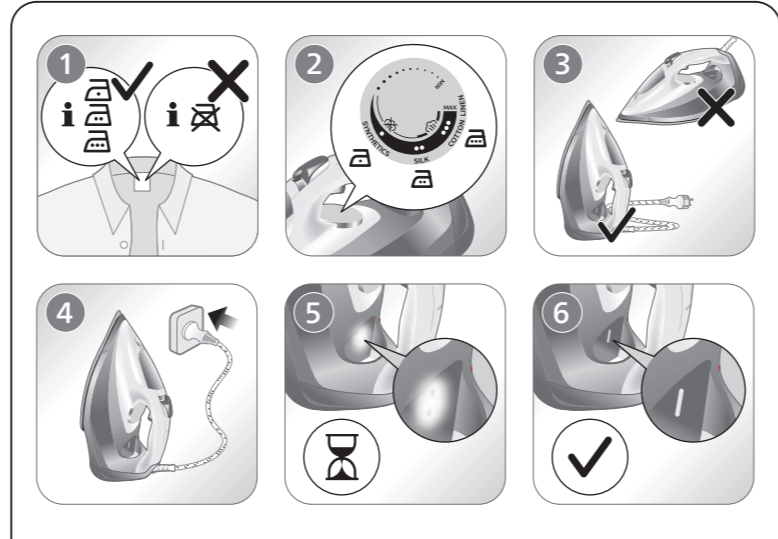
www.philips.com/support



	MAX LINEN	
	COTTON	
	SILK	ECO
	SYNTHETICS	



www.philips.com/support



EN Preparing for use
Smoke can be visible during the first use, and it is normal. This ceases after a short while.

FR Avant utilisation
De la fumée peut être visible lors de la première utilisation. Il s'agit d'un phénomène normal. Cela cesse après un bref instant.

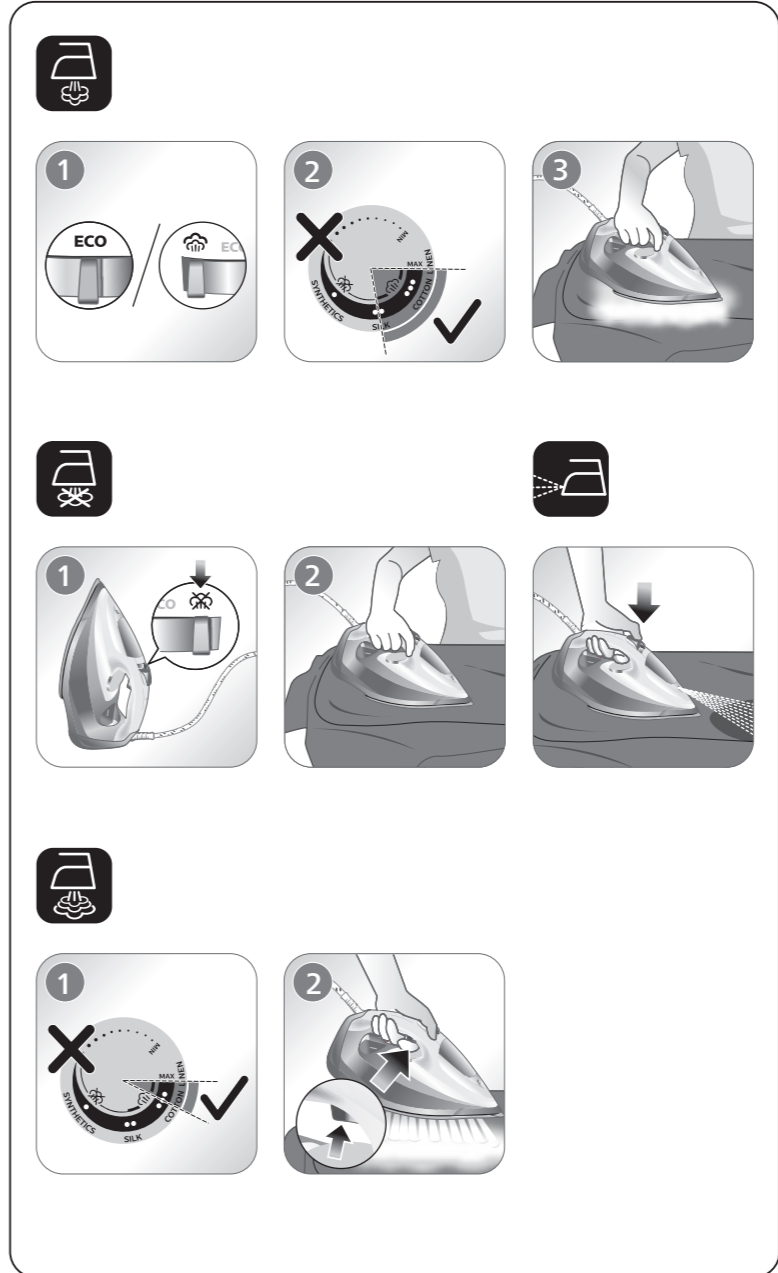
PT Preparar para a utilização
É possível que veja fumo durante a primeira utilização. Isto é normal. Isto deixa de acontecer passado pouco tempo.

FA آماده سازی برای استفاده
ممکن است در اولین استفاده، دود از دستگاه خارج شود که این امر عادی است. این حالت بعد از مدت کمی رفع می شود.

AR التحضير للاستخدام
قد يتصاعد الدخان عند الاستخدام للمرة الأولى، وهذا أمر طبيعي. سيتوقف هذا الأمر بعد وقت قصير.



www.philips.com/support



PHILIPS and the Philips Shield Emblem are registered trademarks of Koninklijke Philips N.V. and are used under license. This product has been manufactured by and is sold under the responsibility of Versuni Holding B.V., and Versuni Holding B.V. is the warrantor in relation to this product.
2023 © Versuni Holding B.V.
6420.010.0130.7 (20/06/2022)

