



Philips 2000 Series Steam iron

DST2010/20

- Up to 25g/min continuous steam for crease removal
- 4 steam settings to tackle creases on all fabrics
- Non-stick soleplate for easy and fast gliding
- Lightweight for quick and easy ironing
- 250 ml water tank for longer ironing sessions

Performance you can trust from #1 ironing brand

Easy and effective ironing

- Up to 25g/min continuous steam for crease removal
- 4 steam settings to tackle creases on all ironable fabrics
- Non-stick soleplate for easy and fast gliding
- Lightweight for quick and easy ironing
- 250 ml water tank for longer ironing sessions
- Calc Clean function for durable performance
- Drip stop technology to prevent leaking while ironing
- Large hole for easy water filling
- Kills up to 99.9% of bacteria*

**Tested by an external institute for the bacteria types E. coli 8099, S. aureus ATCC 6538, C. albicans ATCC 10231 on cotton with 10 seconds steaming time.

Up to 25g/min continuous steam for crease removal, 4 steam settings to tackle creases on all fabrics, Non-stick soleplate for easy and fast gliding, Lightweight for quick and easy ironing, 250 ml water tank for longer ironing sessions

DST2010/20

Highlights

Up to 25g/min continuous steam



Powerful steam rate of up to 25g/min makes ironing easy by ensuring effective crease removal. Combine it with strong steam boost to remove even the toughest wrinkles.

4 steam settings



Multiple steam settings on the iron allow you to easily tackle creases on different fabrics: set low steam for delicates like silk; stronger steam for thicker fabrics.

Easy and fast gliding



Experience easy gliding on all ironable garments thanks to the non-stick soleplate. The iron is coated with special layer to make your gliding smoother and your sessions faster.

Lightweight



Thanks to the light weight of the product, you can iron your garments effortlessly.

250 ml water tank



The large 250 ml water tank ensures longer ironing sessions and minimized refills. Make the most of your time by ironing more garments in one go.

Calc clean



Thanks to the Calc-Clean slider, you can easily remove limescale from your iron. To keep your iron in optimal condition, use this function once a month when using regular tap water.

Drip stop



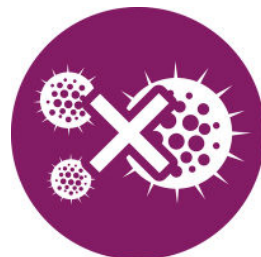
Our Drip Stop system prevents any leaking and staining from water droplets on your garment. So you can iron at your desired temperature without any worries.

Easy refill



The large filling hole in front of the iron makes water refill easy.

Bacteria killing



In addition to de-wrinkling, our Philips iron 2000 Series kills up to 99.9% of bacteria* to refresh clothes and remove odors on garments.

Up to 25g/min continuous steam for crease removal, 4 steam settings to tackle creases on all fabrics, Non-stick soleplate for easy and fast gliding, Lightweight for quick and easy ironing, 250 ml water tank for longer ironing sessions

DST2010/20

Specifications

Comfortable ironing

Cord length: 1.9 m

Technical specifications

Heating time: 30 sec

Easy to use

Water tank capacity: 250 ml

Soleplate name: Non-stick

Drip stop: Yes

Spray: Yes

Size and weight

Weight of iron: 0.95 kg

Fast crease removal

Power: 2000 W

Continuous steam: 25 g/min

Steam boost: 100 g

Vertical steam: No

Variable steam levels: Yes

Guarantee

2 year worldwide guarantee: Yes

Design specifications

Color(s): Sea Blue

Scale management

Descaling and cleaning: Smart Calc Clean



Publication Date
2024-07-26
Version: 17.17.0
EAN: 8720389044595
www.phillips.com

© 2024 Koninklijke Philips N.V. All rights reserved.
PHILIPS and the Philips Shield Emblem are registered trademarks of
Koninklijke Philips N.V. and are used under license.