



## Philips 5000 Series Handheld Steamer

STH5030/80

- Ideal for delicate items, tricky creases
- Stylish streamlined, easy-to-use design
- Portable, convenient, easy to store

## Fashion future: steam meets style

Elevate your wardrobe coolness with Philips

- Sleek design with adjustable head: easy to use and store
- Plug and play: ready to use in seconds, no ironing board needed
- Eco and Max settings: choose the one to suit your outfit
- Pointed tip: perfect for tricky-to-iron areas
- Powerful steaming, for great results made easy
- Detachable water tank for easy refills and no spills
- 50% of the plastic is fully recycled: it looks great and is kind to the planet
- Steam kills up to 99.9% of bacteria/yeast\* and mites^
- 2-in-1 GlovePouch for travel and protection from burns
- Accompanying StyleMat: safe steaming on any flat surface
- Active heated steam plate: protects your most delicate clothes

\*\*Tested with bacteria/yeast test strains: Escherichia coli (8099), Staphylococcus aureus. ATCC 6538, Candida albicans ATCC 10231 ^Tested with test mite species: Dermatophagoides farinae (male and female adult mites and nymphs)

\*\*\*The 1400 W power rating is based on the appliance being connected to a 240 V power supply. Actual power rating may vary depending on the voltage.

Ideal for delicate items, tricky creases, Stylish streamlined, easy-to-use design, Portable, convenient, easy to store

STH5030/80

## Highlights

Sleek design, looks great



The Philips handheld steamer 5000 is ready to steam when you are. Simply set the head to steam clothes on a hanger or a flat surface, and steam away. The adjustable tilting head means it's easy to pack for travelling and can be stored away quickly and easily at home.

Ready to use in 35 seconds



Super easy to use, the Philips handheld steamer 5000 heats up in as little as 35 seconds. You can forget setting up a big old clunky ironing board - now you don't need one. Just steam and de-wrinkle clothes on hangers, or on a flat surface. Job done.

Choose from Eco and Max settings



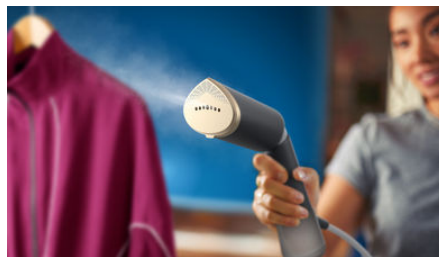
The Philips handheld steamer 5000 will help you get rid of pesky creases on anything in your wardrobe that's ironable. Eco is your ideal energy-saving default setting. Max, with a stronger steam rate, is great for tougher wrinkles and fabrics like cotton.

Pointed tip for tricky creases



The Philips handheld steamer 5000 has a pointed tip, designed to get right into the trickiest corners and smooth out even the most complicated folds, ruffles and cuffs. That means all your most delicate and detailed pieces will be ready to wear whenever you want. No outfit is off limits.

Powerful steaming, great result



On Max level, the Philips handheld steamer 5000 gives you an impressively high steam output for a handheld steamer (Up to 1400 Watts\*\* with an up to 24 g/min continuous steam rate). So you can easily de-wrinkle your favourite outfit at top speed and with no compromise.

Detachable water tank



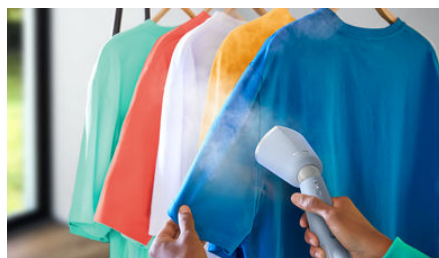
The Philips handheld steamer 5000 comes with a 120 ml and additional 200 ml detachable water tank. So it's super easy to refill when you need to steam for longer, and easy to empty before storing away or packing for a trip. To keep our product style on point, the water tank features a stylish ripple pattern, beautifully depicting the graceful flow of water.

Made with recycled plastic



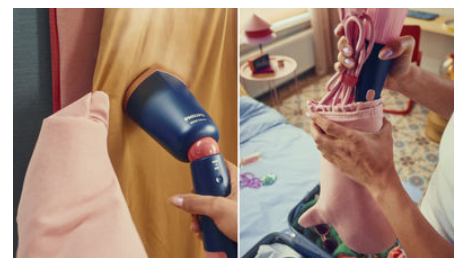
For every thousand Philips handheld steamer 5000 devices that we sell, we reduce the use of virgin plastic by as much as 295,000 plastic straws. So you can feel good while you're steaming, not just when you put on your outfit afterwards.

Kills 99.9% of bacteria



For maximum freshness, the Philips handheld steamer 5000 kills 99.99% of bacteria. So you can feel super confident that the outfit that you're about to put on is extra clean and fresh, whether it's been through the wash or has been already worn.

2-in-1 GlovePouch for travel



The Philips handheld steamer 5000 comes with its own 2-in-1 travel accessory, so you can keep it tidily stowed away and safe from bumps wherever you go. And whatever outfit you take with you can be safely steamed in minutes, as the travel pouch transforms into a safety glove, which additionally protects you from accidental steam burns at home or away.

# Specifications

## Quality of result

Steam plate: Metal  
Voltage: 220 V–240 V  
Power: Up to 1400 W\*\*  
Steam Rate: Up to 24 g/min  
Steaming: Vertical and Horizontal

## Sustainability

Packaging: Sustainable packaging  
Product: Made from 50% recycled plastic

## Easy to use

Detachable water tank: Yes  
Power cord length: 2 m  
Ready to use: Light indicator  
Heat-up time: 35 seconds  
Water tank capacity: 120 ml and 200 ml  
Steam settings: ECO and MAX

## Technology

Safe on all ironable fabrics: Yes  
No burns guaranteed: Yes

## Weight and dimensions

Weight of product: 815 g  
Dimensions of product (L x W x H): 31.7 x 9.7 x 8.6 cm  
Dimension of F-box (D x W x H cm): 35 x 11.3 x 15

## Accessories

Included: 2-in-1 GlovePouch and StyleMat (Light Grey)

## Design and finishing

Colour: Charcoal Grey

## Country of origin

Made in: China

