



## **Installation Manual**

**Hoover H-Fridge**

**ENDLESS  
FRESHNESS**

**EN | IT | DE | EL | ES | FR | PL | PT**







## WELCOME

This installation manual is designed for kitchen manufacturers who will deal with these products. To ensure safety and get the best results, please read this manual carefully, including the safety instructions, and keep it for future reference. Before proceeding with the installation, take note of the serial number, as you may need it in case of repairs. Check for any damage during transport and consult a technician when in doubt before using. Always keep all packing material away from children.

**i NOTE:** Features, pictures in the manual and product accessories may vary depending on the model purchased.

## index

<b>1</b>	<b>Safety warnings for installation</b>	<b>p.4</b>
<b>2</b>	<b>Where to install the product</b>	<b>p.5</b>
<b>3</b>	<b>Refrigerator dimensions</b>	<b>p.6</b>
<b>4</b>	<b>Installation tools</b>	<b>p.8</b>
<b>5</b>	<b>Cabinet dimensions</b>	<b>p.8</b>
5.1	Precautions	
5.2	Dimensions	
<b>6</b>	<b>Cabinet installation and ventilation</b>	<b>p.10</b>
6.1	Installation in column	
<b>7</b>	<b>Installation video step by step</b>	<b>p.11</b>
<b>8</b>	<b>Change the direction of door opening</b>	<b>p.12</b>
8.1	Unlocking the doors	
8.2	Removing the bottom screw	
8.3	Hinges inversion	
8.4	Attaching the bottom screw on the opposite side of the refrigerator	
<b>9</b>	<b>Installation instructions for the refrigerator</b>	<b>p.14</b>
9.1	Applying the top installation bar of the refrigerator	
9.2	Applying the adhesive spacers on the side of the refrigerator	
9.3	Centering the refrigerator feet	
9.4	Built-in installation	
9.5	Securing the refrigerator feet	
9.6	Mounting the central brackets and covers	
9.7	Mounting the bottom covers	
9.8	Applying the gaskets on the side of the refrigerator	
9.9	Mounting the top covers and securing the refrigerator to the upper shelf	
9.10	Attaching the sliding hinges to the cabinet door	

## index

<b>10</b>	<b>Connection to the mains</b>	<b>p.28</b>
10.1	Warnings	
10.2	Other advices	
<b>11</b>	<b>Delivery to the user</b>	<b>p.30</b>
<b>12</b>	<b>Disassemble the product</b>	<b>p.30</b>

# 1 Safety warnings for installation

**Observe these directions before beginning the installation of the product.**

**Please observe the following guidelines before starting the installation of the product. Your safety is very important to us. Read these instructions carefully before using the product.**

- The installation must be carried out by a qualified technician who is familiar with and adheres to the applicable laws in the country of installation and the manufacturer's instructions;
- If assistance from the manufacturer is required to rectify faults resulting from incorrect installation, such assistance is not covered by the warranty;
- Remove the packaging material before operating the appliance;
- After unpacking the product, check that it is not damaged. In case of any issues, contact the service center before proceeding with installation and do not connect it to the power supply;
- A damaged product can cause a short circuit, electric shock, fire hazard, and other dangers;
- Check for any accessories or supplementary materials (bags with screws, documents, brochures, etc.) in the packaging and, if present, remove and store them;
- Before installing the appliance, ensure that ventilation is sufficient to allow the proper circulation of fresh air needed for cooling and protecting the internal components. Depending on the type of set-up, create the specified openings as illustrated;
- If manufacturer assistance is needed to rectify any faults due to incorrect installation, such assistance is not covered by the warranty. Follow the installation instructions provided for qualified personnel;
- Incorrect installation can cause damage or injury to people, animals, or property. The manufacturer cannot be held responsible for such damage or injury;
- Safe usage is guaranteed only if the installation has been carried out correctly according to these instructions. In case of damage due to incorrect installation, the responsibility lies with the installer;
- It is recommended to wear protective gloves during installation to avoid injury from cuts;
- The warranty does not cover damage caused by incorrect installation;
- In case of incorrect installation, tampering with the appliance, or non-compliant connection, the product warranty becomes invalid;
- After installation, the power cord must not come into contact with moving parts of kitchen components (e.g., a drawer) and must not be subjected to mechanical stress;
- This product requires constant ventilation during use. Do not cover the air vents;
- Upon completion of the installation, the technician must ensure that the product has been installed correctly.



### Important warnings

- Do not install the appliance in areas exposed to direct sunlight to avoid altering the product's performance;
- Install and use this product in an enclosed, covered, dry, and well-ventilated environment;
- Do not install the product in outdoor areas exposed to weather elements;
- Install the product near an electrical outlet;
- Keep the product away from sources of flames;
- Install the appliance on a flat surface, in an area suitable for its size and use;
- Clean the appliance with water and a mild detergent, and dry it with a soft cloth;
- The appliance is heavy; at least two people are required to move it;
- After installation, allow the refrigerator to rest for at least 4 hours before turning it on to let the compressor oil settle.

### **This product is intended solely for installation in domestic or similar environments, such as:**

- Kitchen areas intended for staff in shops, offices, and other working environments;
- Spaces available to staff and customers in hotels, motels, and other residential-type environments;
- Beauty farms, Bed & Breakfasts (B&B);
- For catering services and similar applications, excluding retail sales.

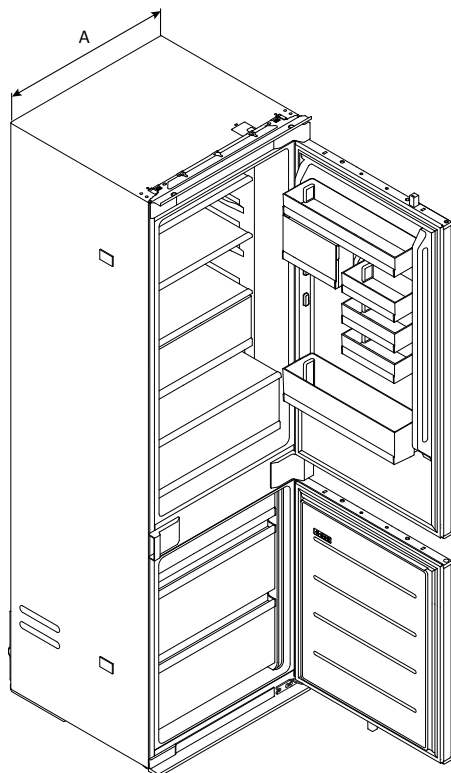
### **Install this product in a location where the ambient temperature is not lower or higher than the operating temperature indicated on the product label: otherwise, the appliance will not function correctly.**

- Extended temperate (SN): "This appliance is intended for use in ambient temperatures ranging from 10°C to 32°C";
- Temperate (N): "This appliance is intended for use in ambient temperatures ranging from 16°C to 32°C";
- Subtropical (ST): "This appliance is intended for use in ambient temperatures ranging from 16°C to 38°C";
- Tropical (T): "This appliance is intended for use in ambient temperatures ranging from 16°C to 43°C."

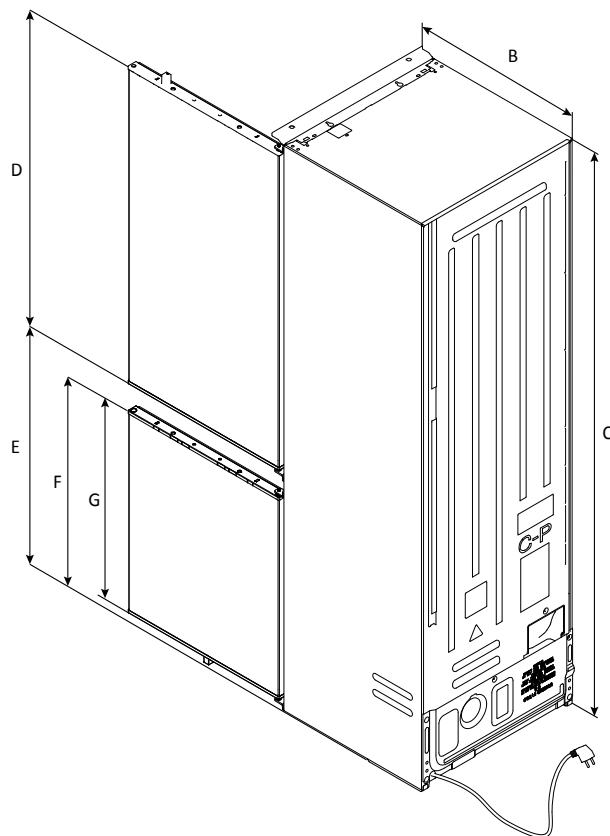
### 3 Refrigerator dimensions

Dimensions in **mm**

Front axonometric view



Rear axonometric view

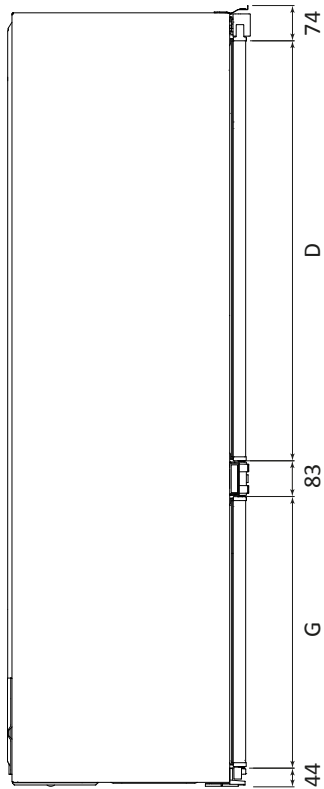


cable length 2270mm

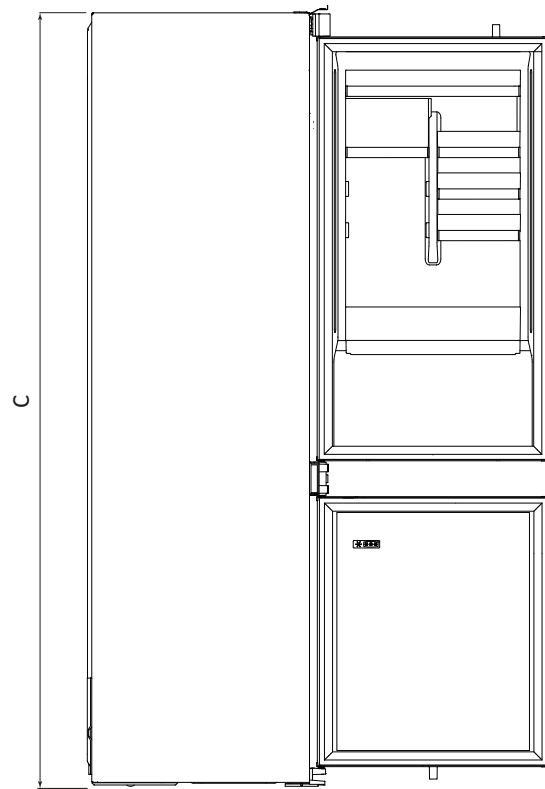
Models	A(mm)	B(mm)	C(mm)	D(mm)	E(mm)	F(mm)	G(mm)
1	540±2	550±2	1772±2	970	745	662	618
2	540±2	550±2	1935±2	1133	745	662	618
3	690±2	550±2	1935±2	1133	745	662	618

Dimensions in **mm**

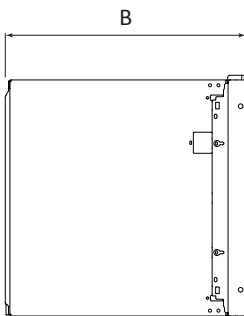
**Side view**  
with doors closed



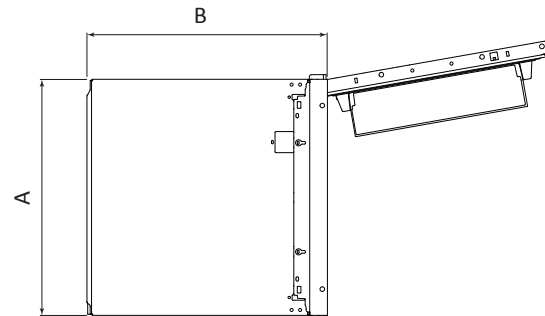
**Side view**  
with doors open



**Top view**  
with doors closed



**Top view**  
with doors open

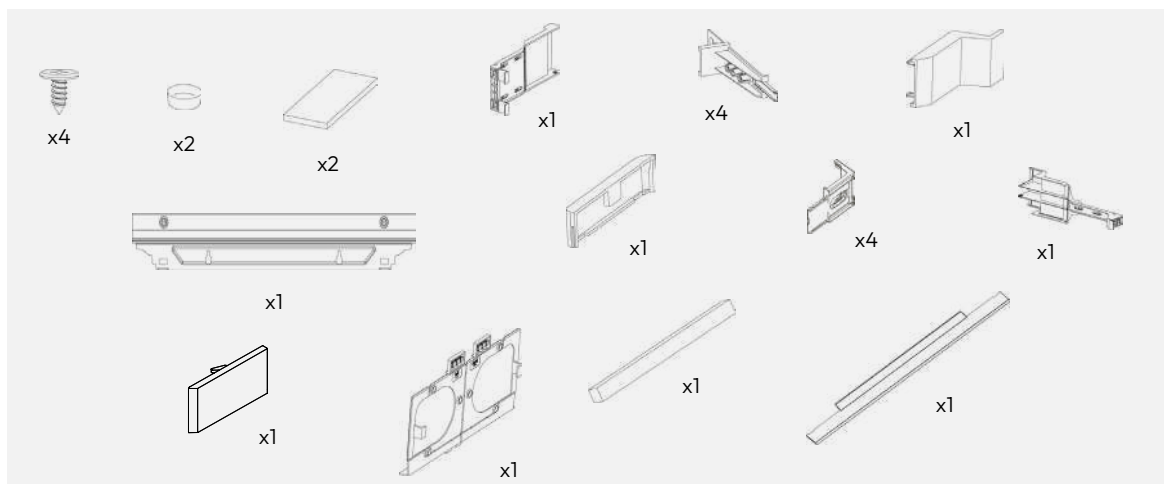


## 4 Installation tools

Tools needed



Accessories provided



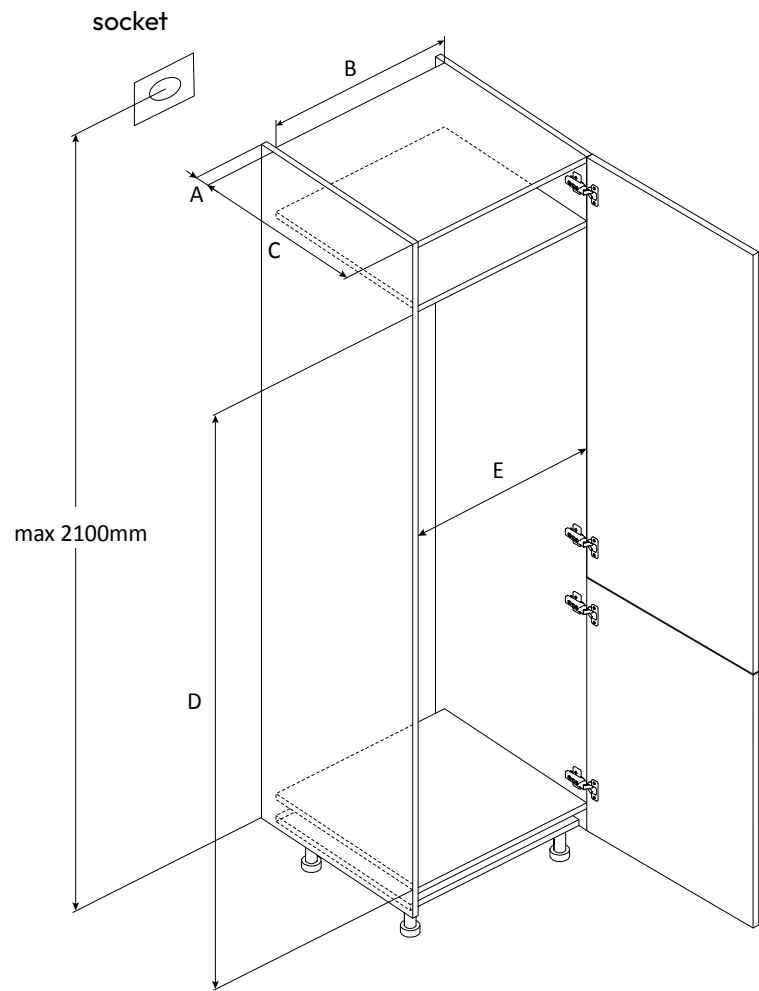
## 5 Cabinet dimensions

### 5.1 Precautions

- Provide the built-in compartment without a back wall;
- For product ventilation, follow the instructions in this manual;
- It is recommended to secure the unit to the wall to prevent tipping.

5.2 Dimensions in mm

**Front axonometric view**  
with doors open

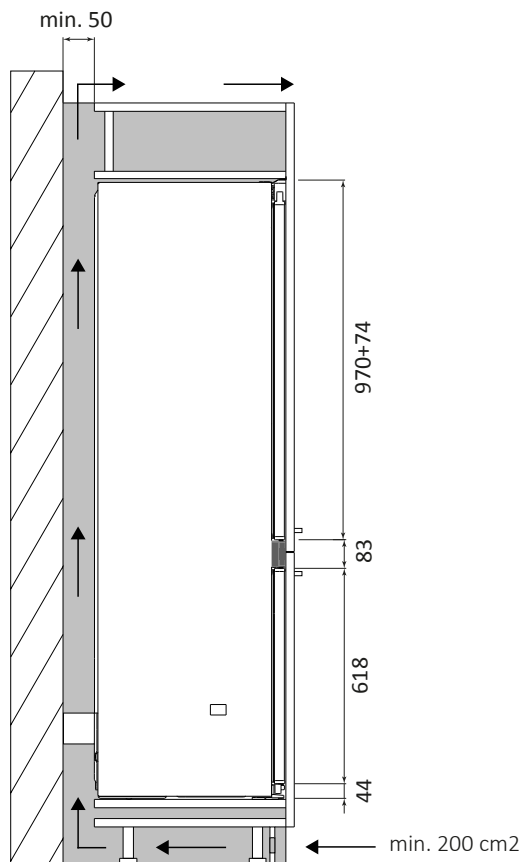


Models		A(mm)	B(mm)	C(mm)	D(mm)	E(mm)	Remark
1	Min.	50	400	560	1778	560	Hinges: 17mm
	Recommended			580	1780	562	
	Max.			-	1782	568	
2	Min.	50	400	560	1941	560	
	Recommended			580	1943	562	
	Max.			-	1945	568	
3	Min.	50	400	560	1941	710	
	Recommended			580	1943	712	
	Max.			-	1945	718	

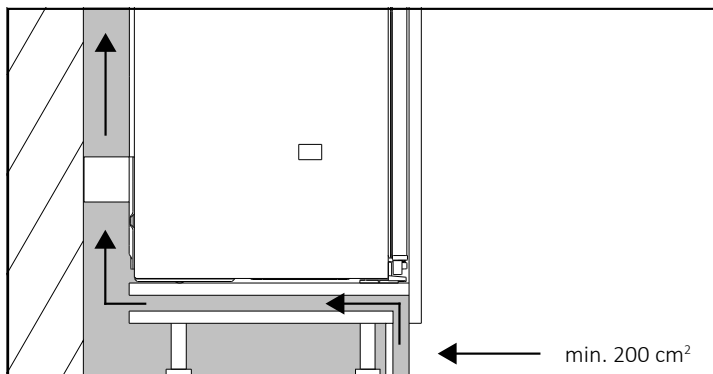
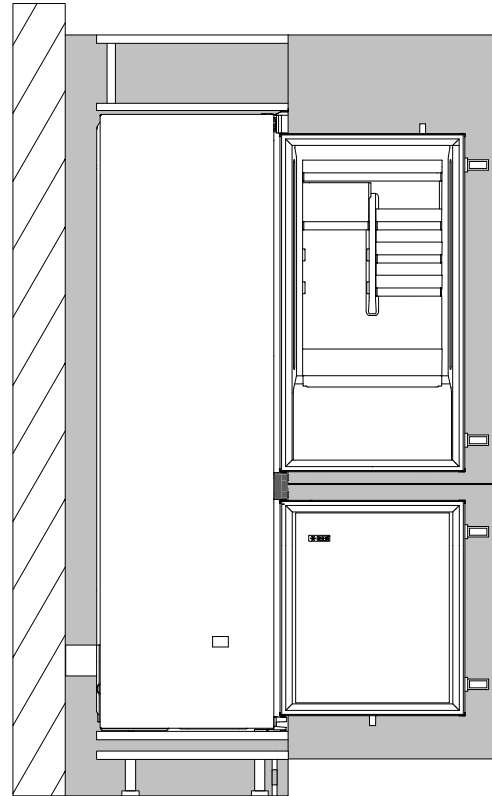
## 6 Cabinet installation and ventilation

### 6.1 Installation in column

Side section



Side section



If it is not possible to create an opening in the baseboard, find an alternative solution to ensure proper air circulation.

You can view the product installation video by scanning the Qr Code.

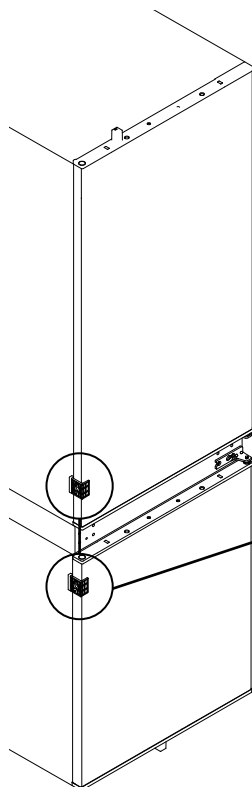


or by clicking  
this [link](#)



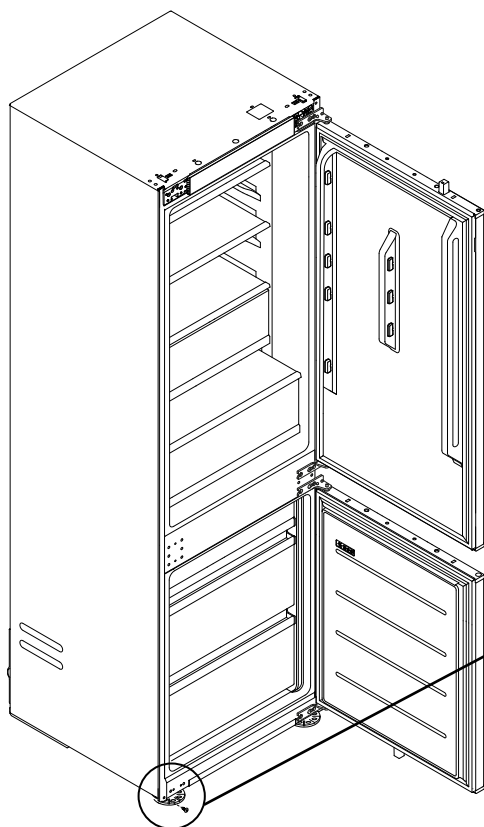
## 8 Change the direction of door opening

### 8.1 Unlocking the doors



Loosen the screw 5mm ,push down the gasket blocks to remove them , discard them (not the screws because you will need them in a later stage).

### 8.2 Removing the bottom screw



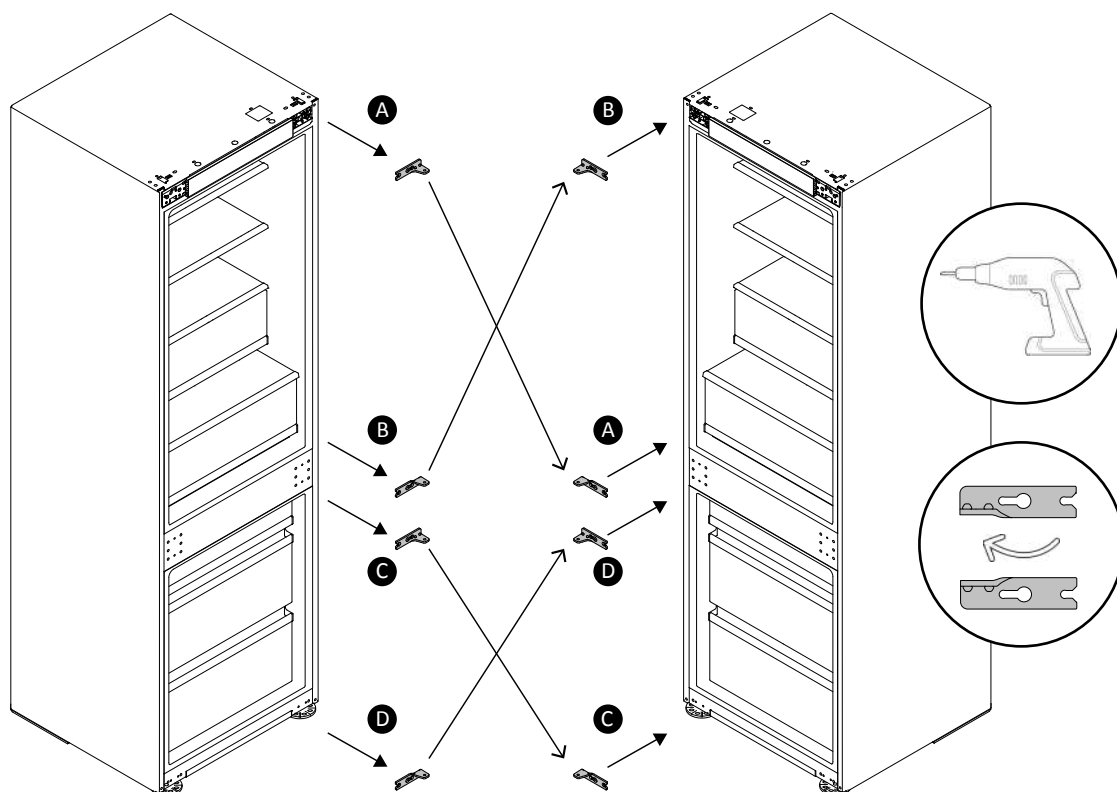
Remove the screw as shown in the diagram and keep it for the step 8.4.



**NOTE:** Follow the following instructions only if it is necessary to reverse the direction of door opening; otherwise, proceed to the next paragraph (page 16).

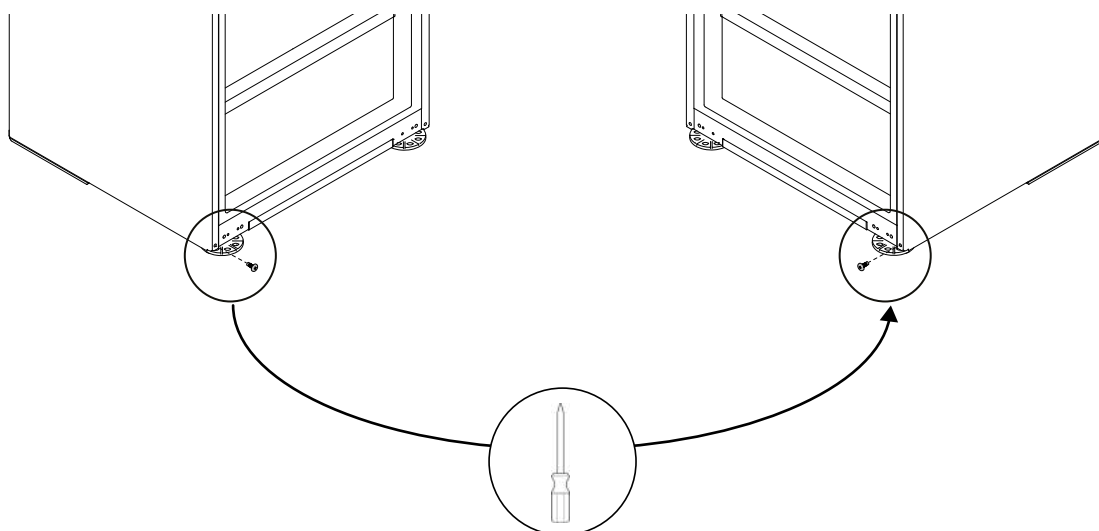
## 8.3 Hinges inversion

Rotate the hinges 180° and mount them as shown in the diagram.



## 8.4 Attaching the bottom screw on the opposite side of the refrigerator

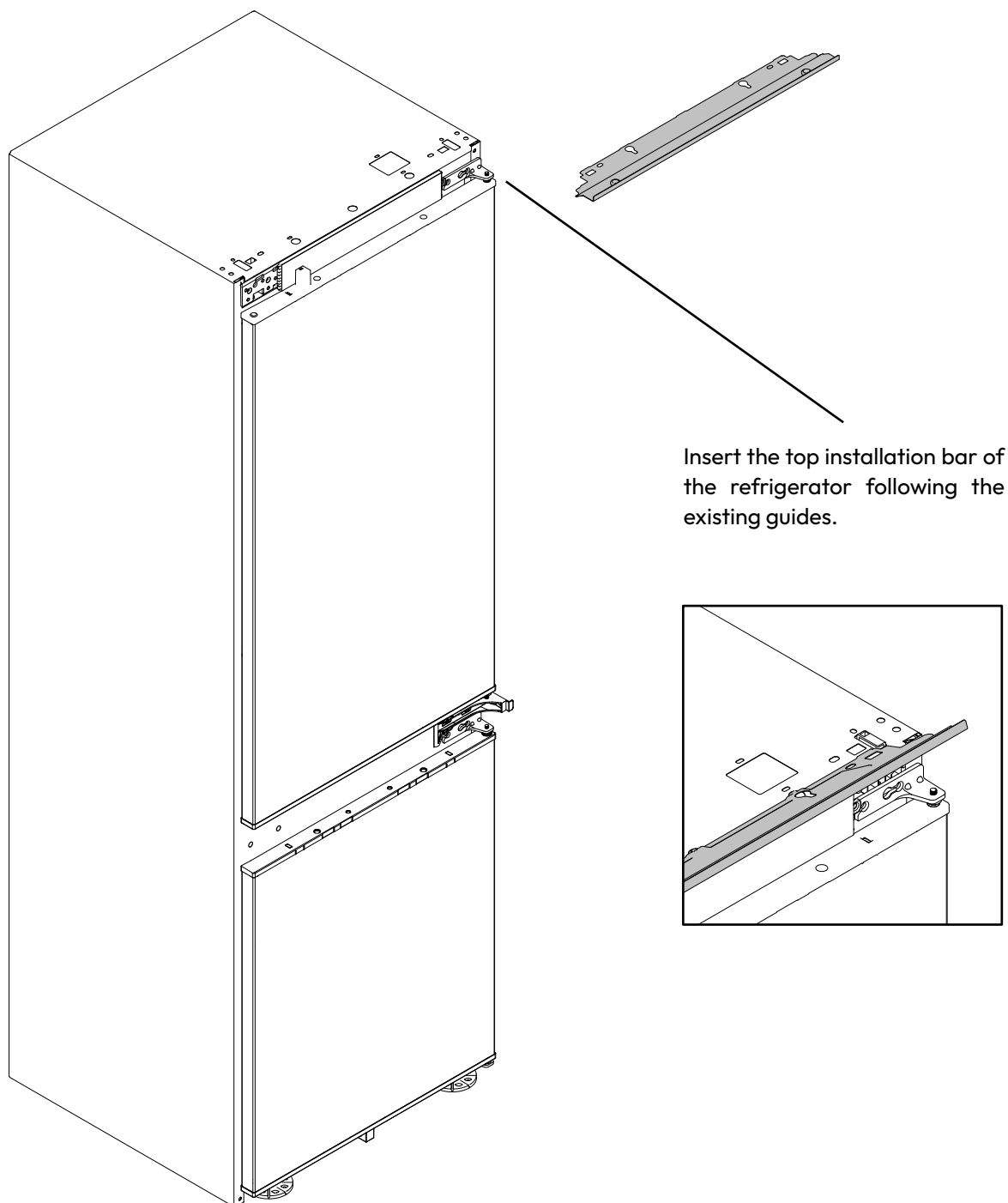
Tighten the screw (of the step 8.2) on the opposite side of the refrigerator as shown in the diagram.



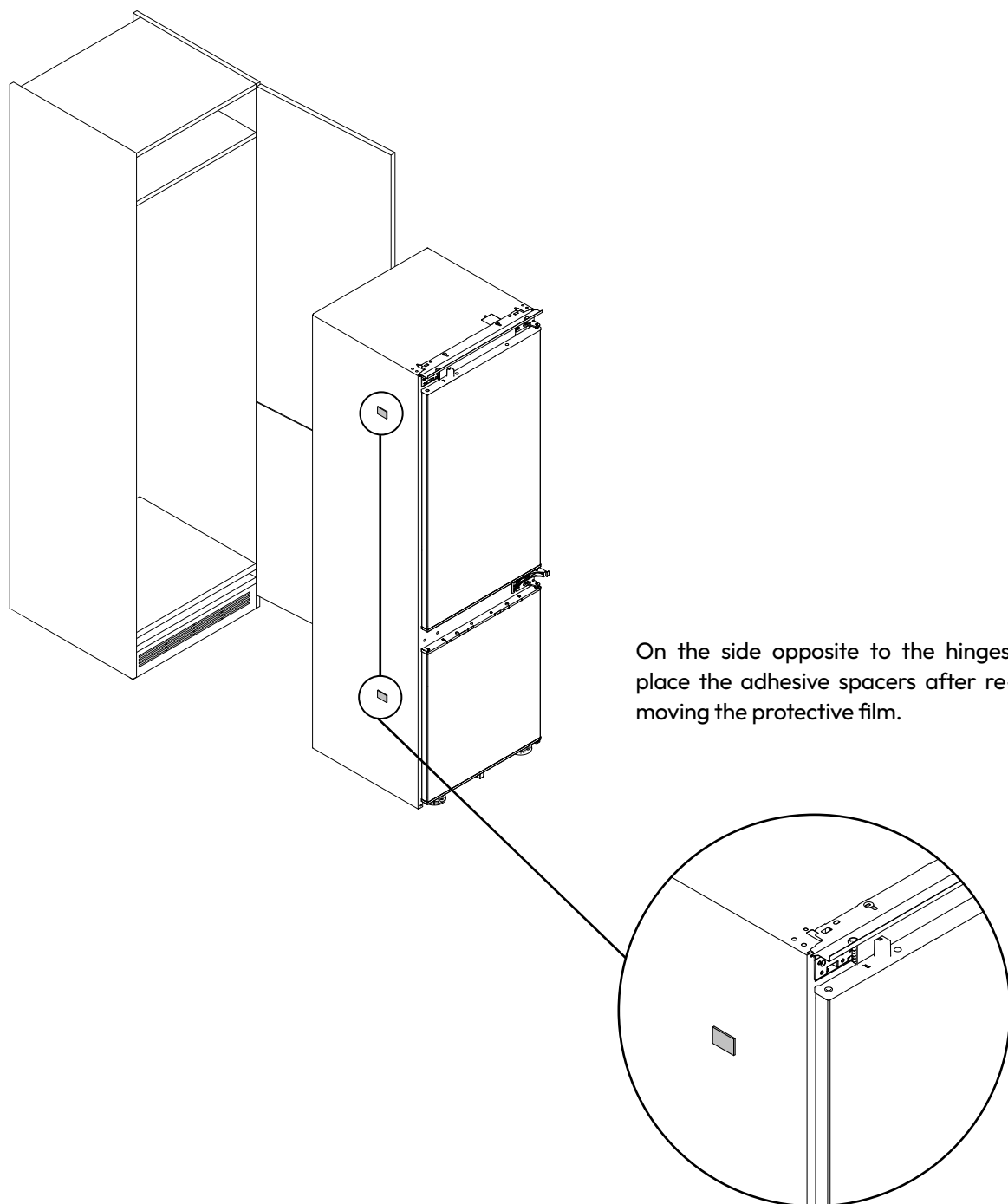
## 9 Installation instructions for the refrigerator

**!** Before proceeding, if you have not completed step 8.1 yet, do it now.

### 9.1 Applying the top installation bar of the refrigerator



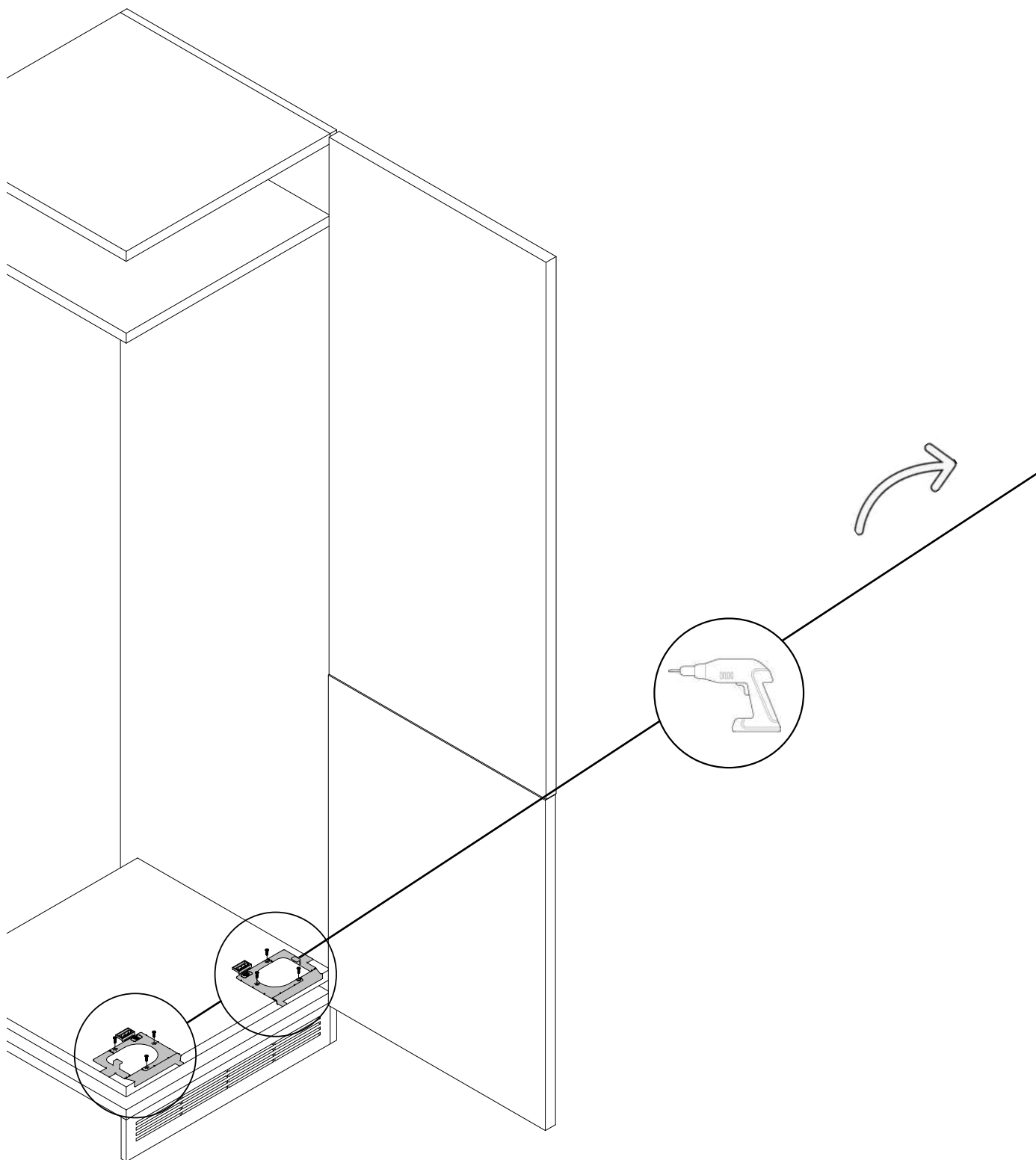
## 9.2 Applying the adhesive spacers on the side of the refrigerator



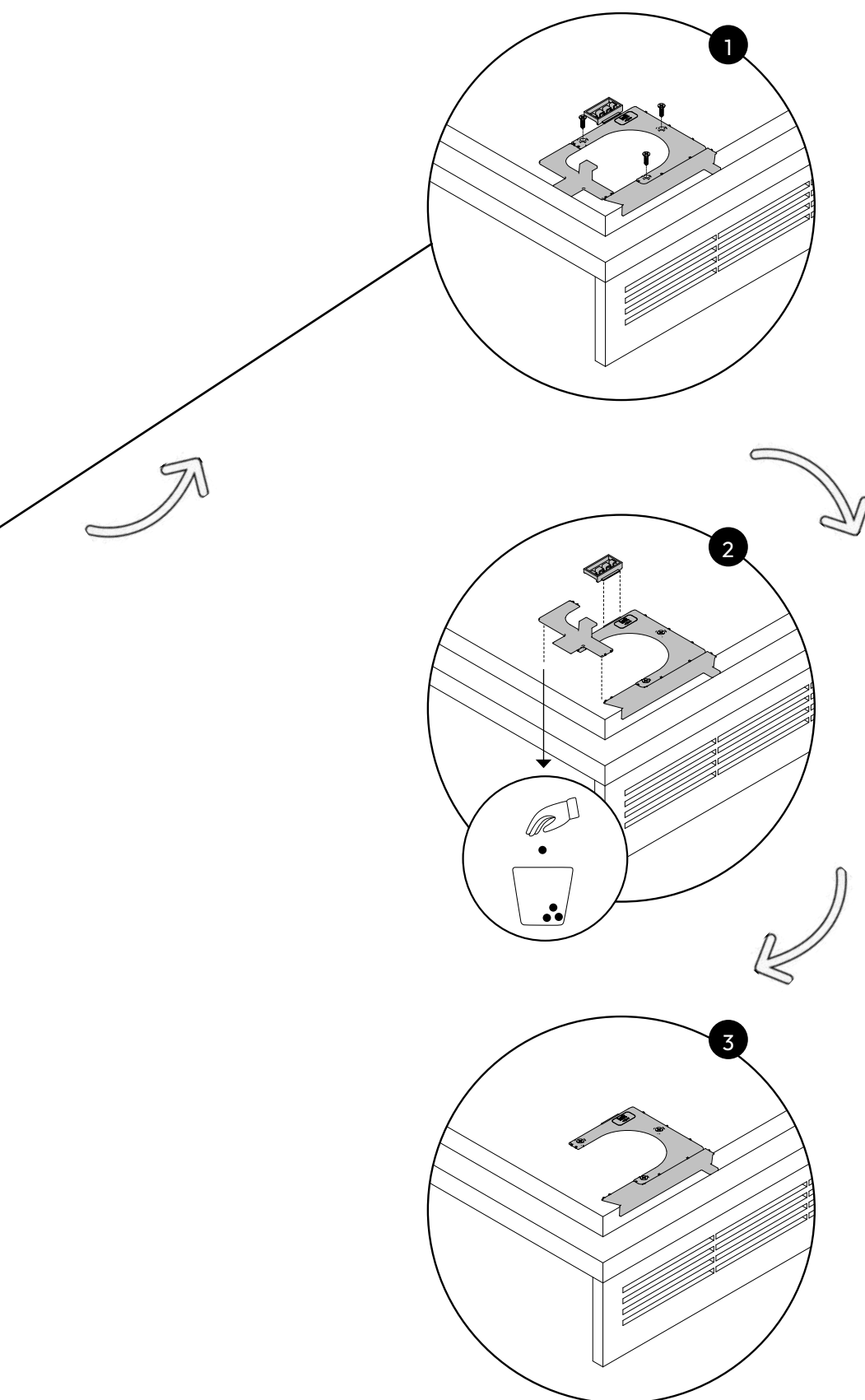
## 9 Installation instructions for the refrigerator

### 9.3 Centering the refrigerator feet

Install the centering gauges for the feet on the bottom of the cabinet using the provided screws. Remove any excess parts as shown in the diagram.



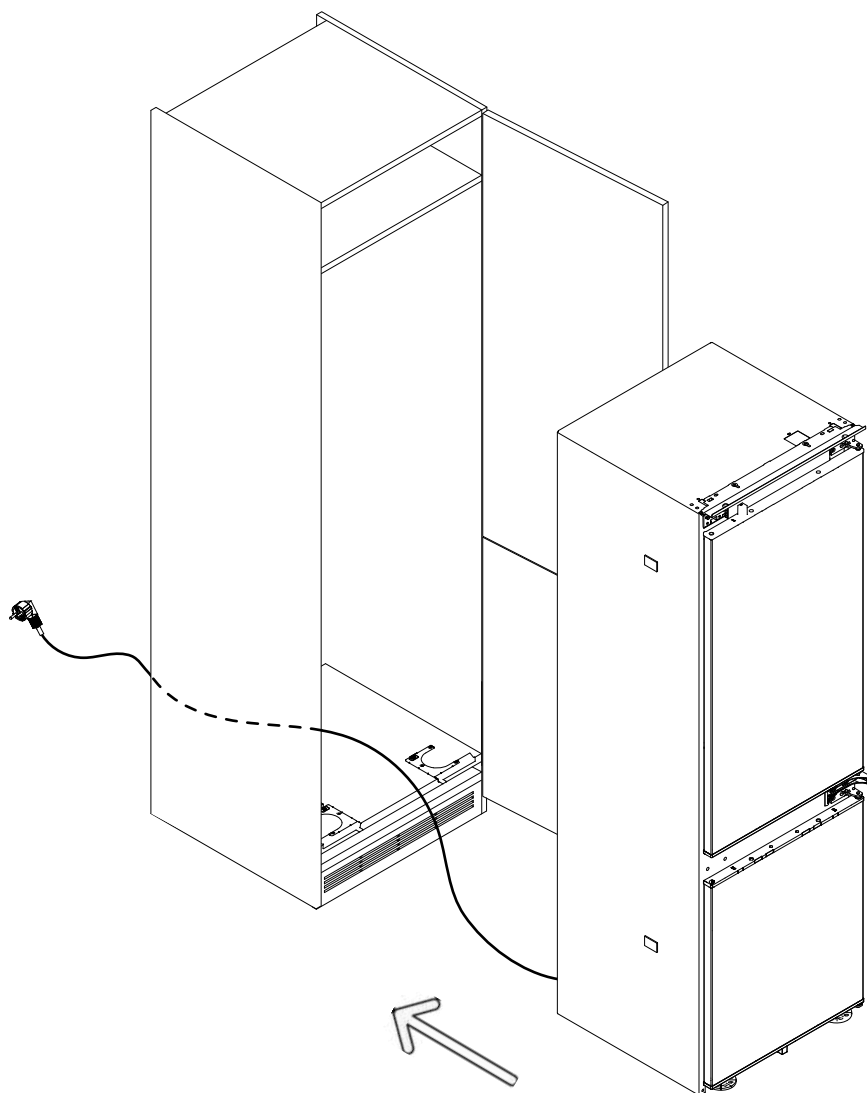
## 9.3 Centering the refrigerator feet



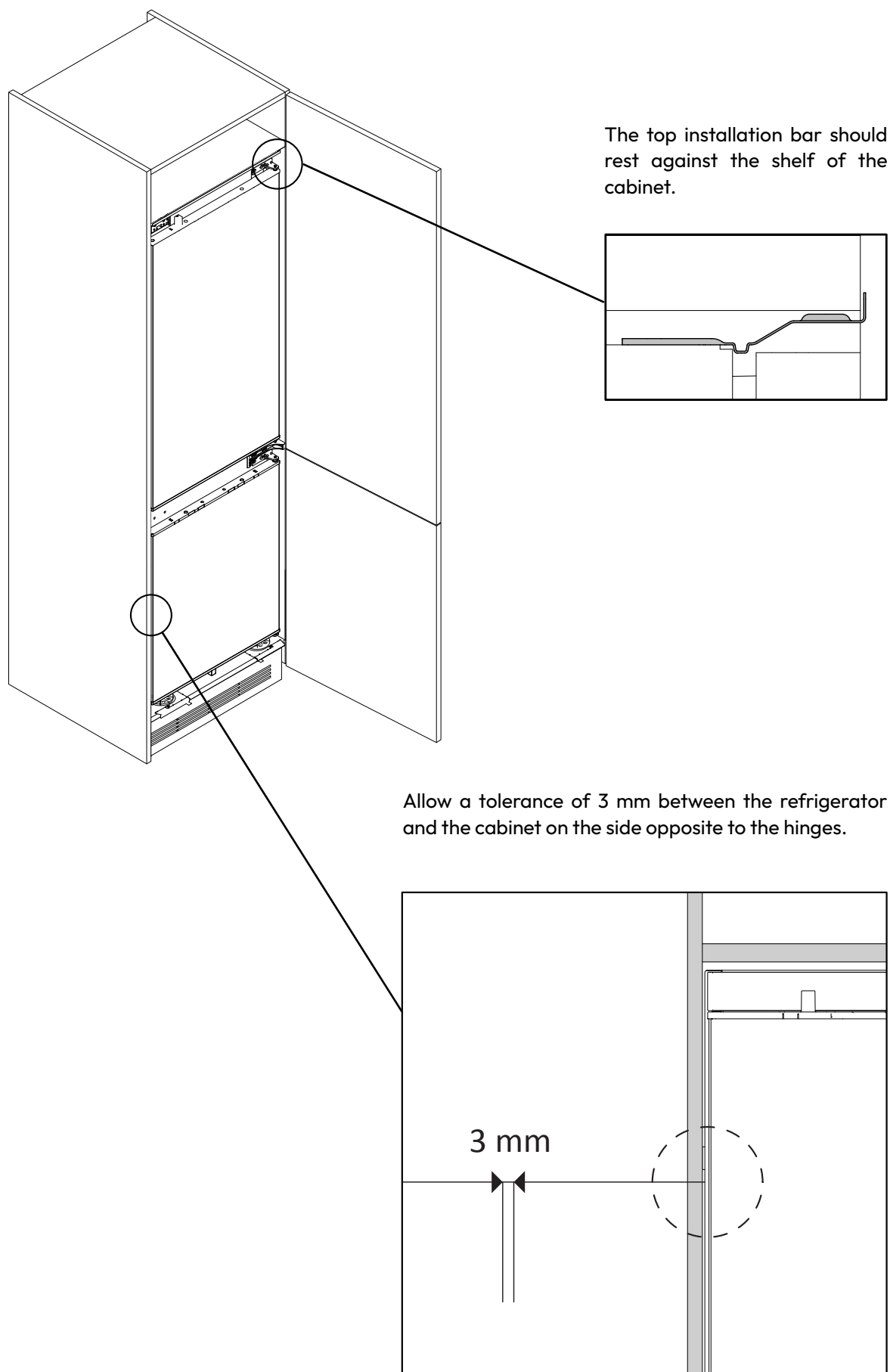
## 9 Installation instructions for the refrigerator

**⚠ WARNING:** before inserting the refrigerator into the cabinet, thread the power cord through and temporarily secure it on top with tape. Then, lift the product with two people and insert it into the recess, taking care not to damage the power cord. Ensure that the outlet must be freely accessible.

### 9.4 Built-in installation



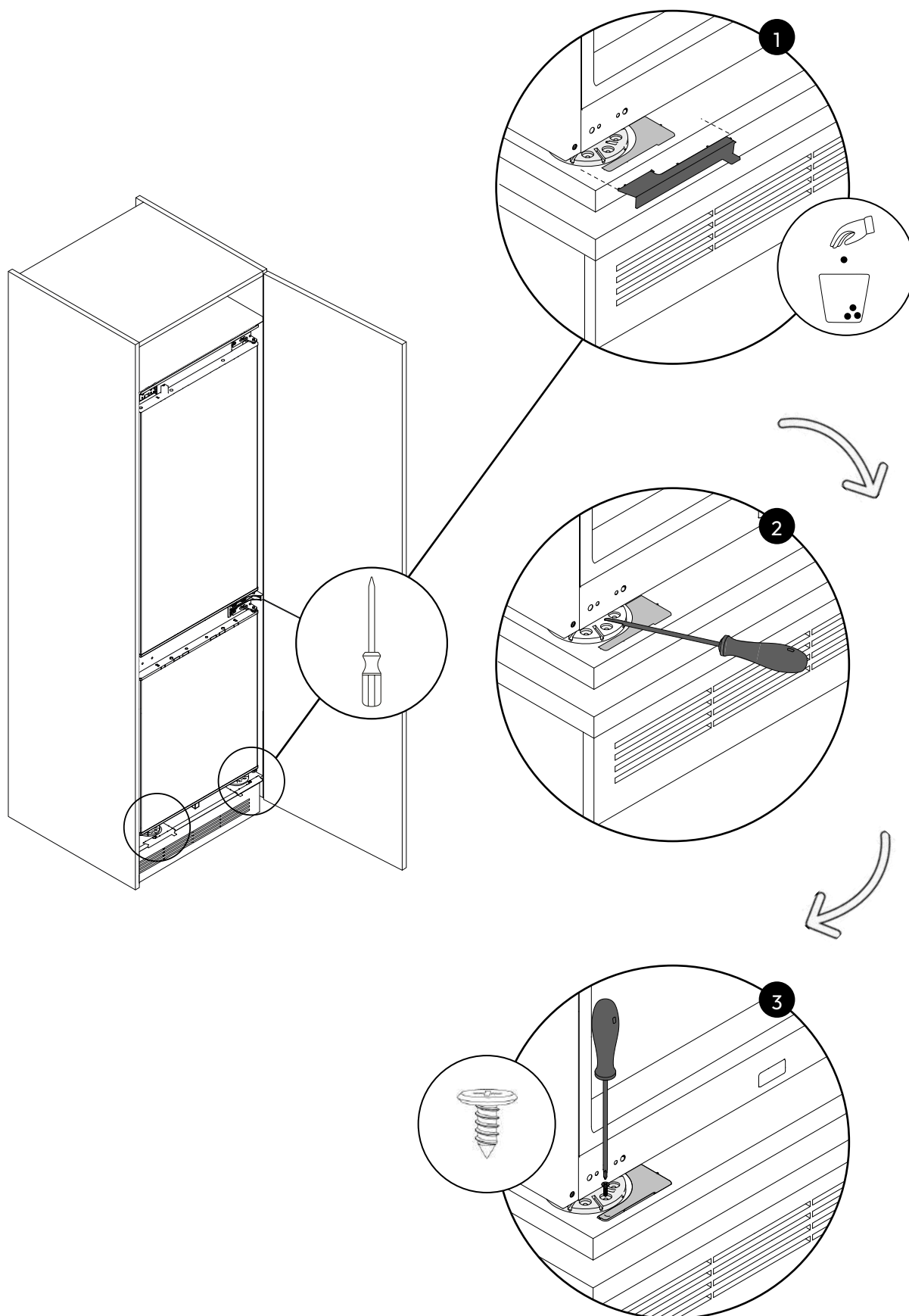
## 9.4 Built-in installation



## 9 Installation instructions for the refrigerator

### 9.5 Securing the refrigerator feet

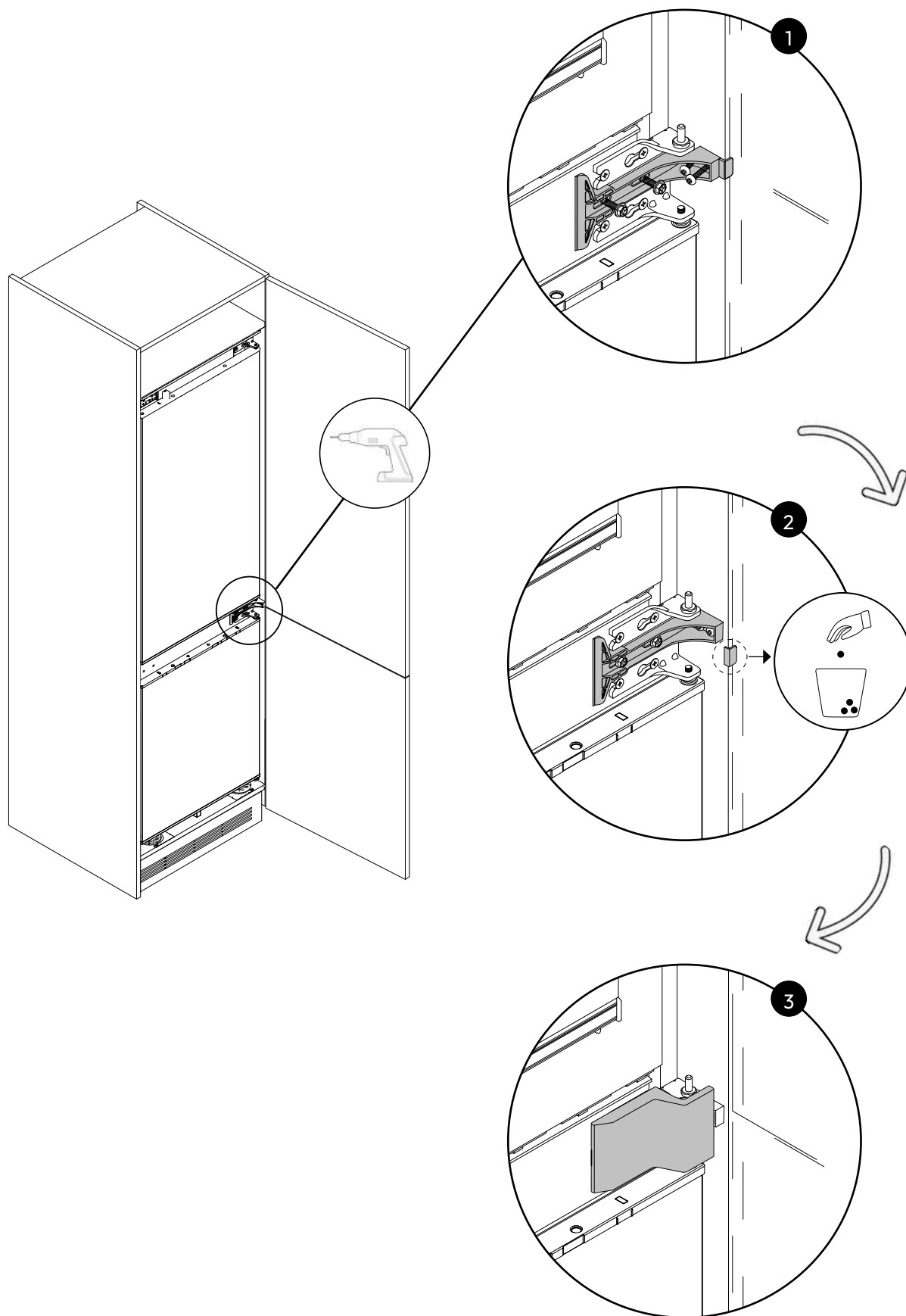
Remove the fin from the foot centering component. Adjust to the desired height and secure the refrigerator feet to the cabinet using the provided screws.





## 9.6 Mounting the central brackets and covers

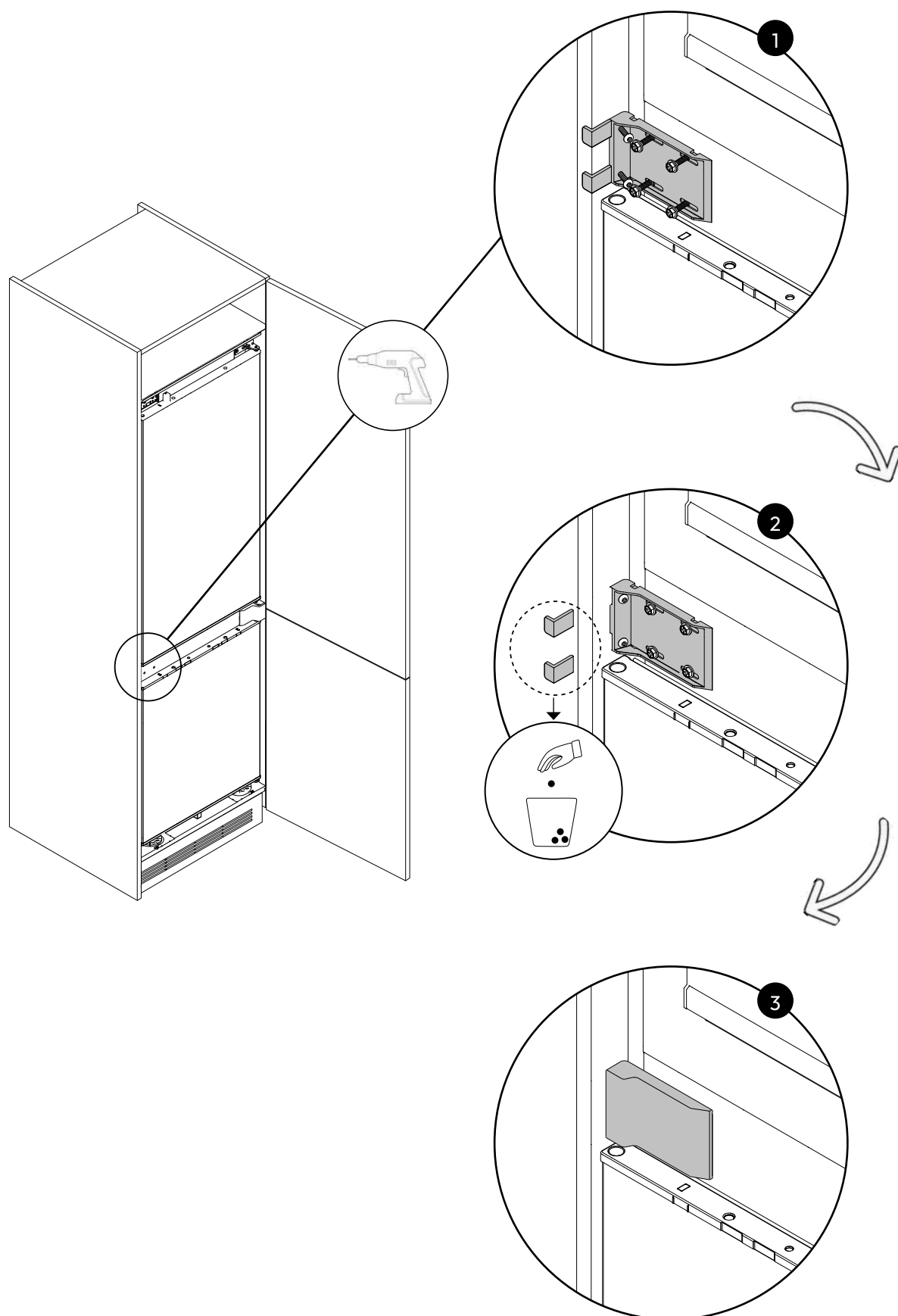
Using the provided screws, attach the bracket on the refrigerator's opening side. Remove the positioning fin. Finally, place the cover.



## 9 Installation instructions for the refrigerator

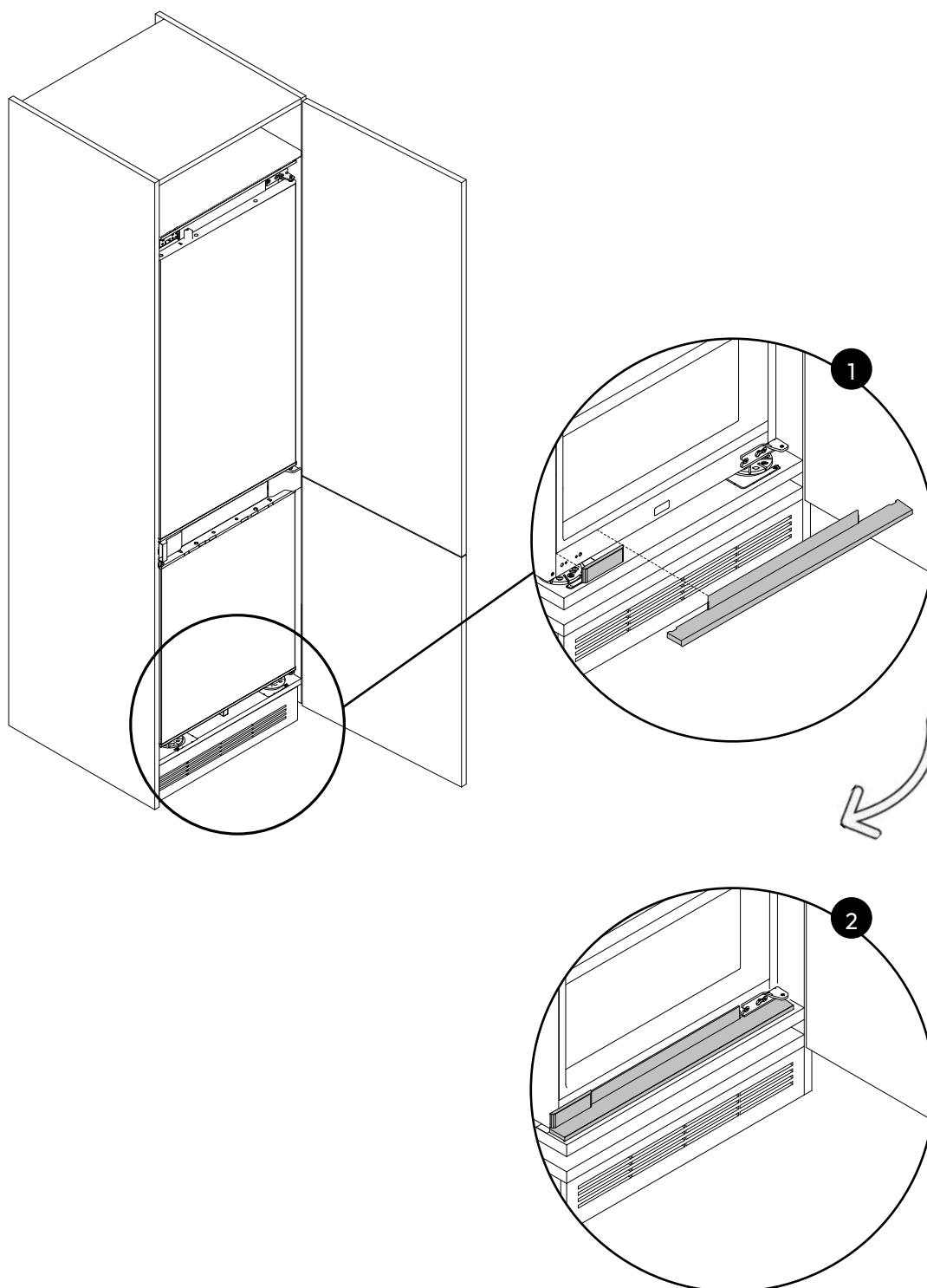
### 9.6 Mounting the central brackets and covers

Using the provided screws, attach the bracket on the side opposite to the hinges. Remove the positioning fins. Finally, place the cover.



## 9.7 Mounting the bottom covers

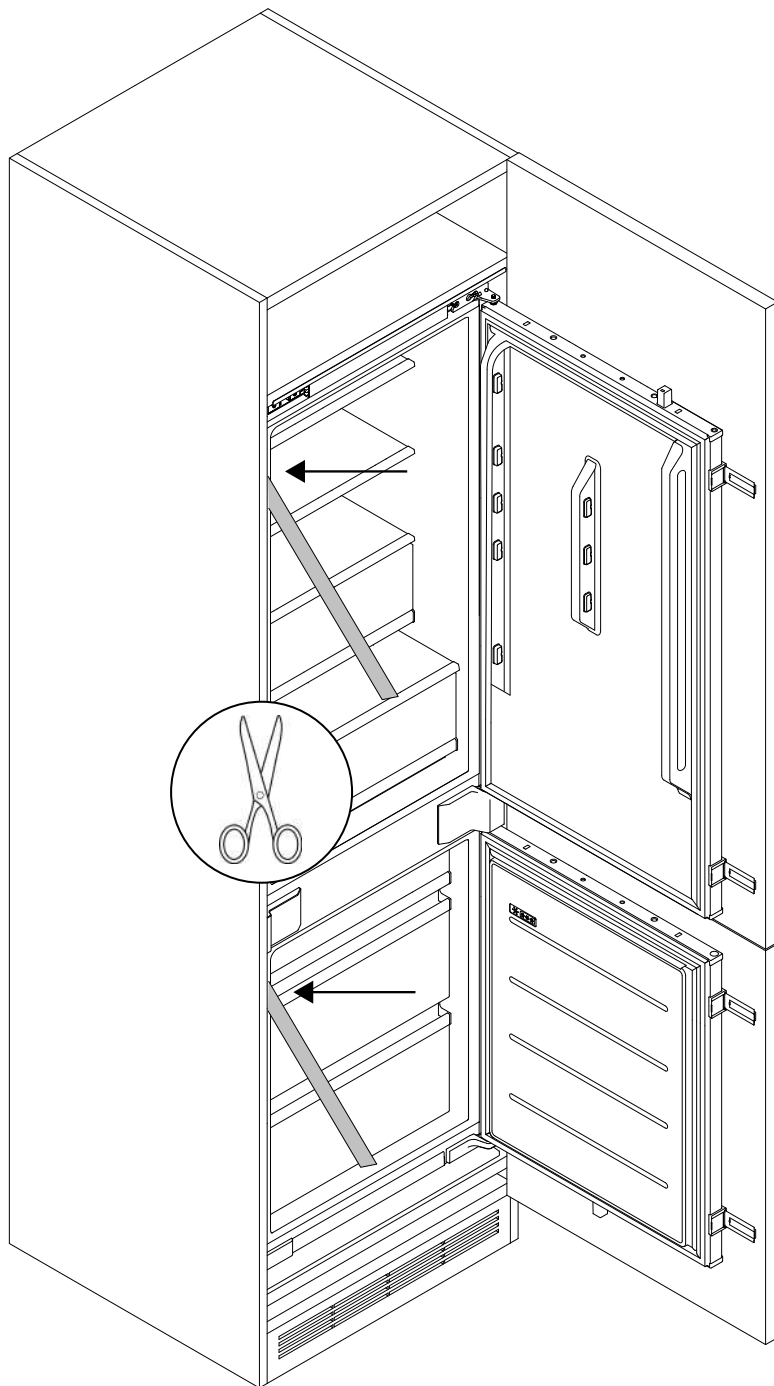
Apply the two bottom covers, securing them as shown in the diagram.



## 9 Installation instructions for the refrigerator

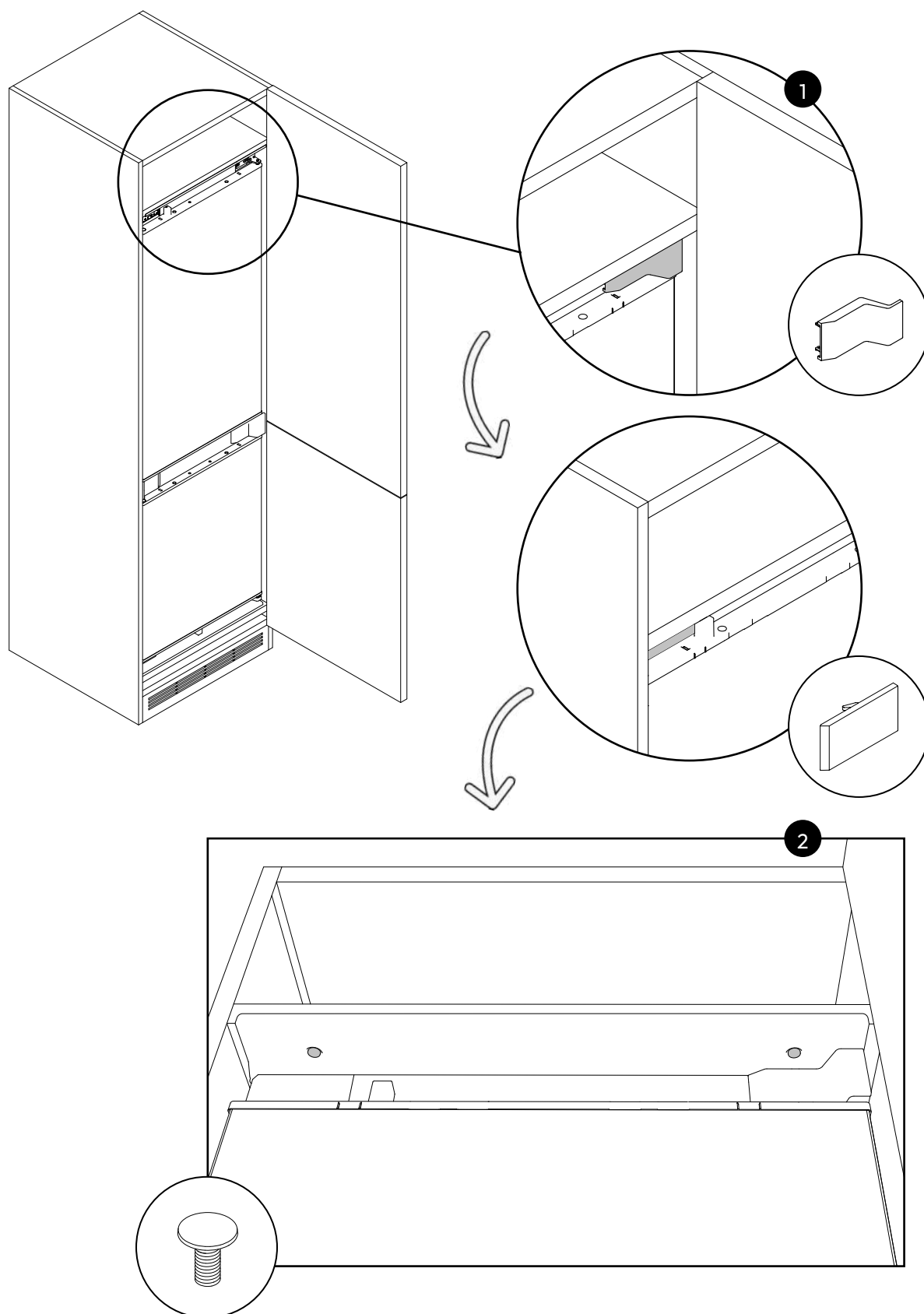
### 9.8 Applying gaskets on the side of the refrigerator

Cut the gaskets to size and apply them to the side of the refrigerator, on the side opposite to the hinges.



## 9.9 Mounting the top covers and securing the refrigerator to the upper shelf

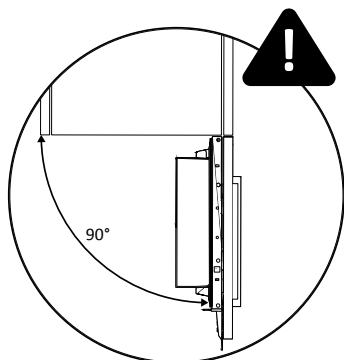
Using the provided screws, secure the upper front panel to the cabinet shelf, then cover the upper hinge and the opposite side with the covers.



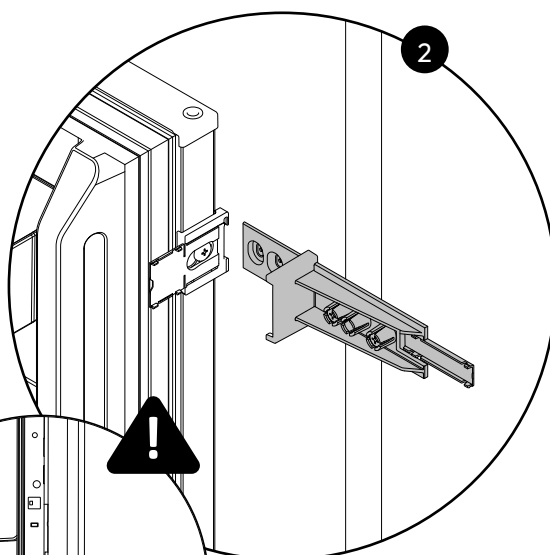
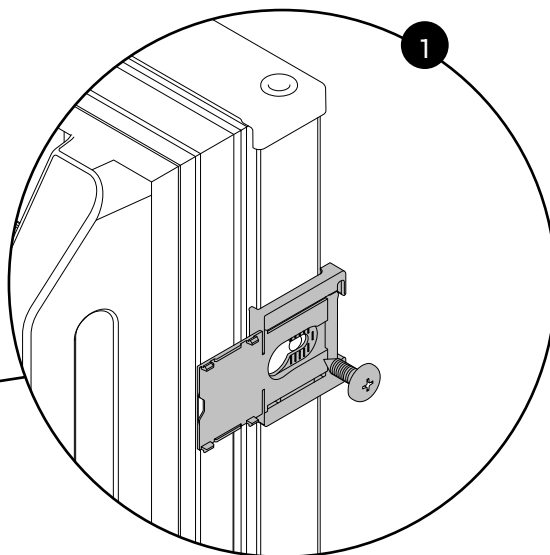
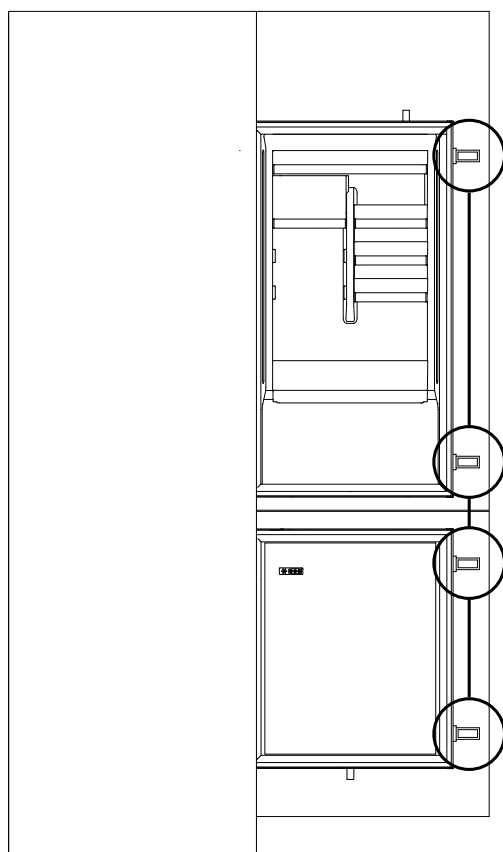
## 9 Installation instructions for the refrigerator

### 9.10 Attaching the sliding hinges to the cabinet door

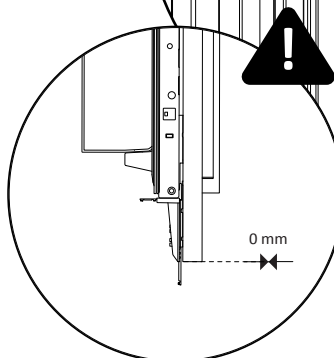
Before starting, ensure that both the cabinet door and the refrigerator door are perfectly open at 90 degrees.



Unscrew the previously tightened screws on the doors and attach the rollers to the refrigerator doors.

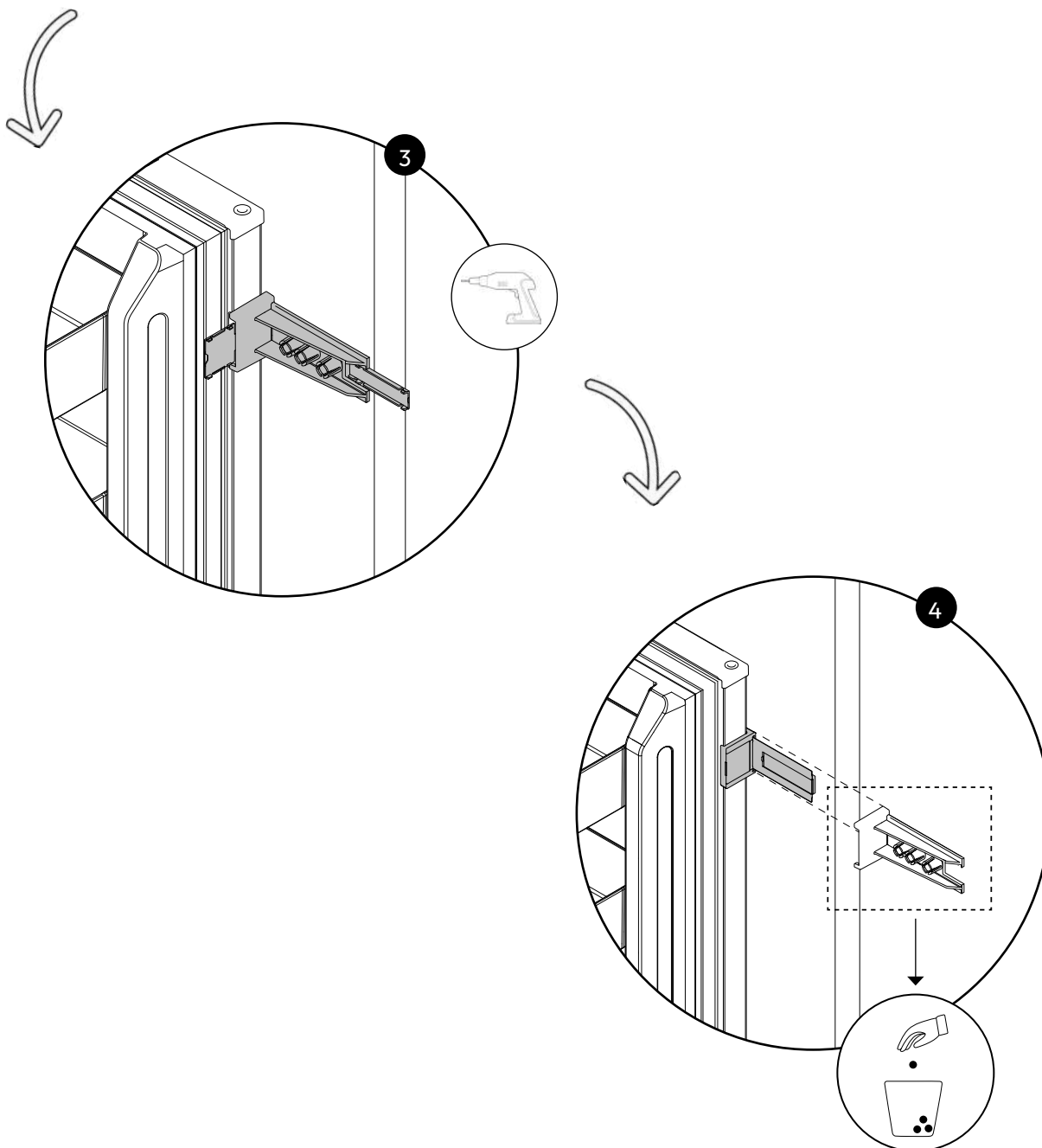


Install the roller ensuring that the guide is perfectly aligned with the edge of the cabinet door.



## 9.10 Attaching the sliding hinges to the cabinet door

Using a screwdriver, secure the rollers to the cabinet doors. Then, remove the guides as shown in the diagram.



## 10 Connection to the mains

### 10.1 Warnings

To safely perform the electrical connection of the appliance, observe the following warnings:

- Any repair, installation, and maintenance not performed correctly can seriously endanger the user;
- The manufacturing company declares no responsibility for direct or indirect damages caused by incorrect installation, maintenance, or repair interventions.
- The company also does not respond to damages caused by the lack or interruption of the grounding system (e.g., electric shock);
- Connect the product exclusively using the provided power cord;
- The product must be connected to an electrical system installed professionally;
- In case of damage caused by improper connection, the warranty is void;
- For any repairs, contact Customer Service exclusively and request the use of original spare parts;
- Disconnect the product from the electrical supply before performing any intervention or maintenance on it.
- To avoid the risk of fire or electrical shock, do not damage the plug or power cord;
- Do not connect the appliance to power strips, extension cords, or portable power supplies;
- When the appliance is placed in the chosen location, make sure the power cord is not stuck or damaged and that there are no power strips or portable power supplies in the back of the appliance.

#### **Power absorbed**

See product data plate.

#### **Differential circuit breaker (life-saving)**

The use of a residual current circuit breaker (earth leakage circuit breaker) with trip current complying with current standards is recommended.

**⚠ WARNING:** the product must be connected to the power supply via an omnipolar disconnection device that ensures a separation between contacts complying with overvoltage category III. Such a device must withstand the maximum loads connected and comply with current standards.

- Make sure the electrical specifications on the data plate are in conformity with the power supply;
- The appliance operates on 220-240 Vac/50 Hz electric current;
- Abnormal voltage fluctuations may cause the appliance not to start, damage to the temperature control or compressor, or abnormal noises during operation. In such a case, an automatic regulator should be fitted;



- Ensure that the main cable is not caught under the appliance during and after transportation/movement, to prevent the main cable from being cut or damaged. If the power cord of the appliance should be damaged, do not proceed with the installation and contact service;
- Ensure that the power source, plug, and fuses are conform to the data on the data plate;
- Make sure the power plug is grounded and do not use power strips or extension cords.



**NOTE (United Kingdom only):** the power cord of the appliance is equipped with a 3-prong plug (grounded) suitable for a standard 3-prong outlet (grounded). Never cut or remove the third prong (ground connection). After installing the appliance, the plug must remain accessible.

### 10.2 Other advices

The use of any household appliance requires adherence to certain basic rules:

- It is recommended to keep the plug clean: any dirt residue on the plug may cause fire;
- Do not pull the power cord to disconnect the appliance from the power supply while operating;
- Do not touch the appliance with wet or damp hands or feet. The use of adapters, power strips or extension cords is discouraged;
- In case of malfunction and/or performance drop, turn off the appliance and do not manipulate/alter it.

## 11 Deliver to the user

---

At the end of installation:

- Inform the user about essential functions;
- Inform the user about all aspects relevant to safe use and handling;
- Deliver accessories and instructions for use and assembly to the user to be kept with care.
- After installation is complete, remove the protective film, tape, and all other packing materials.
- After turning the fridge on, wait at least 2 hours before placing food in the appliance to ensure the correct temperature inside the fridge.



**WARNING:** the product requires adequate ventilation for normal operation.  
Do not obstruct the ventilation openings for any reason.



**NOTE:** the actual appearance of the product depends on the model chosen.

## 12 Disassemble the product

---

- Disconnect the product from the power supply;
- Unscrew the fixing screws;
- Lift the product slightly and pull it out completely;
- This product will not damage the cabinet, which can also be used with a new appliance.

