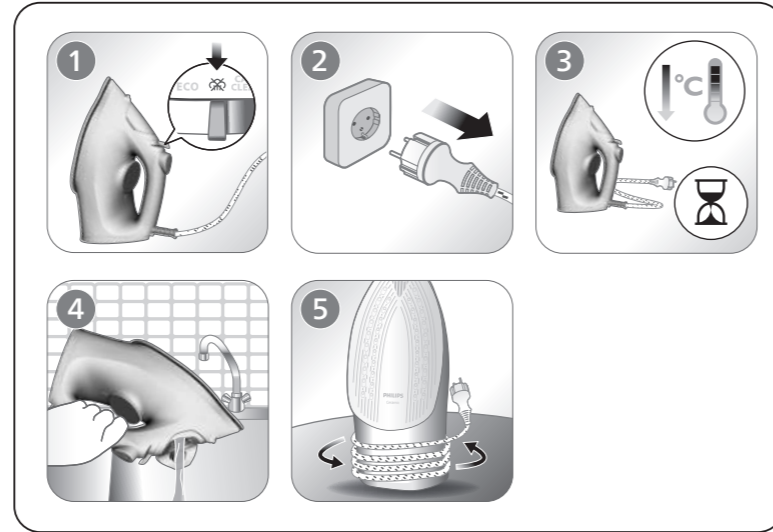




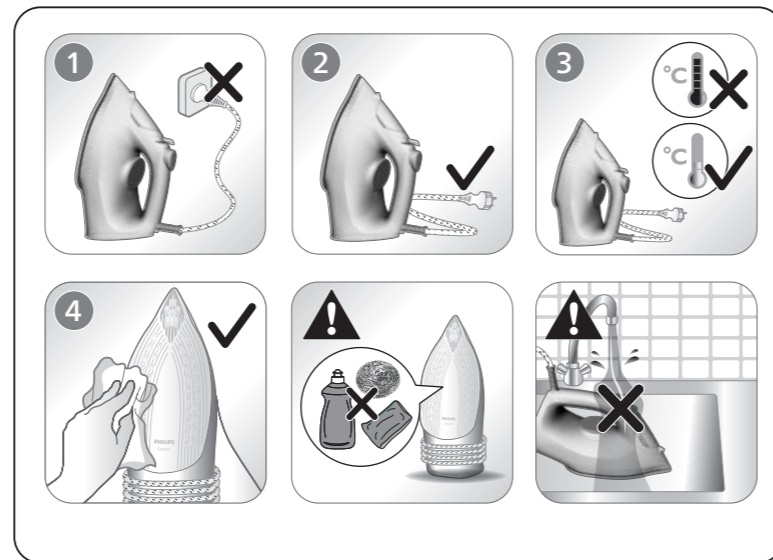
### 3

[www.philips.com/support](http://www.philips.com/support)



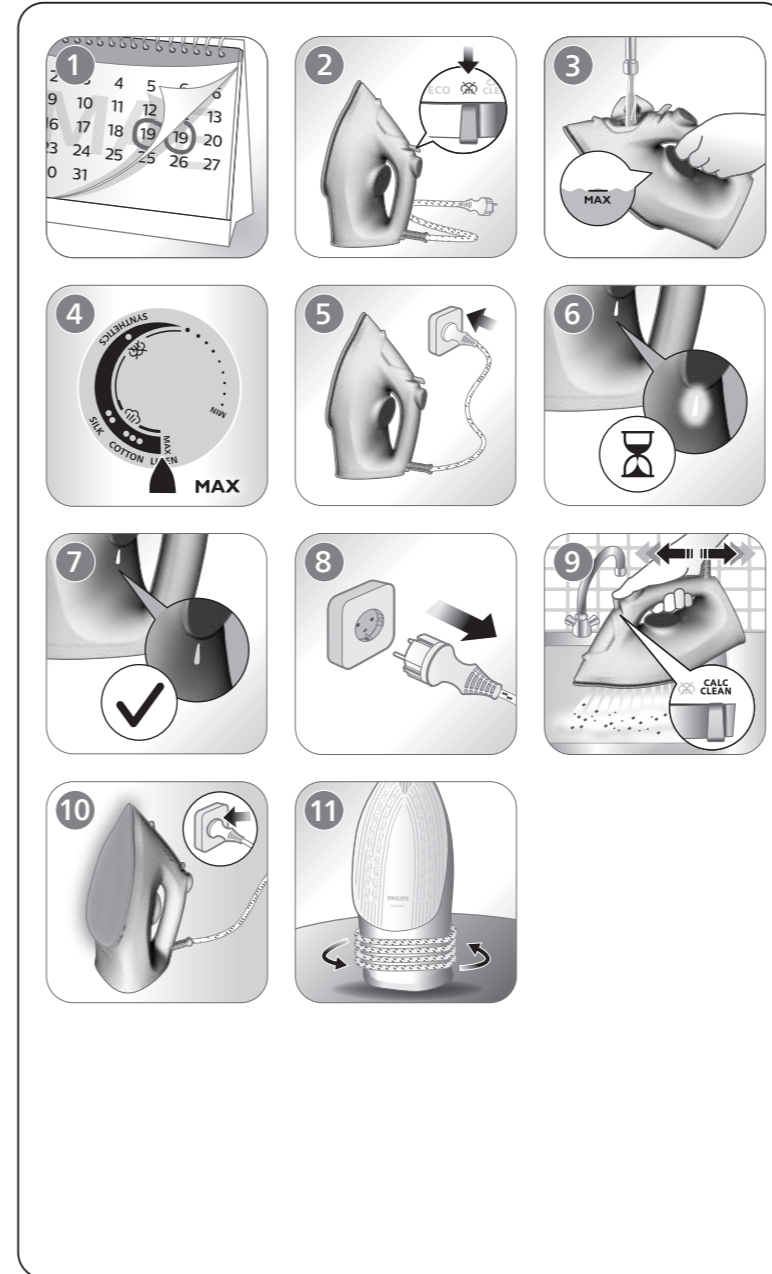
### 4

[www.philips.com/support](http://www.philips.com/support)



### 5

[www.philips.com/support](http://www.philips.com/support)



**PHILIPS**

DST 1000 Series



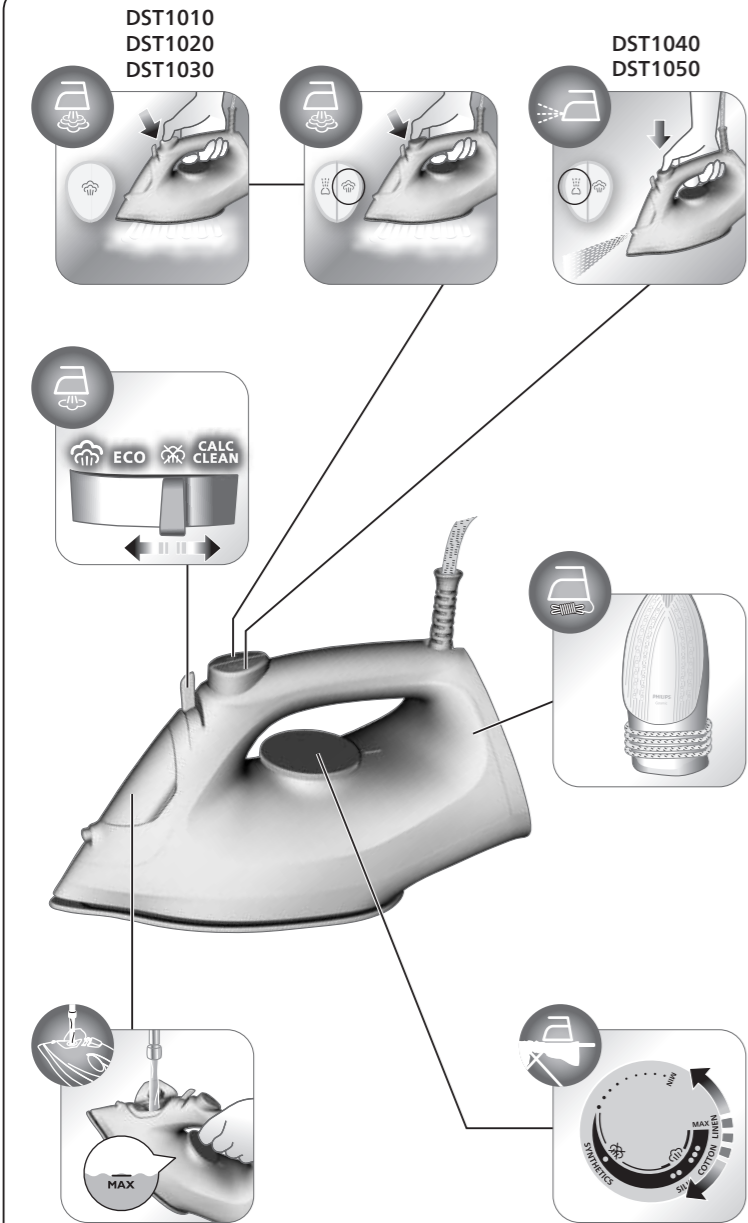
EN User manual	PL Instrukcja obsługi	TR Kullanım kılavuzu
DE Benutzerhandbuch	CS Příručka pro uživatele	UK Посібник користувача
FR Mode d'emploi	EL Εγχειρίδιο χρήσης	MK Упатство за користење
NL Gebruiksaanwijzing	BG Ръководство за потребителя	SQ Manual përdorimi
DA Brugervejledning	HR Korisnički priručnik	AZ Korisnički priručnik
FI Käyttöopas	ET Kasutusjuhend	HY Օգտագործողի ձեռնարկ
NO Brukerhåndbok	HU Felhasználói kézikönyv	KA მომხმარებლის სახელმძღვანელო
SV Användarhandbok	LT Vartotojo vadovas	KY Колдонуучунун нускамасы
IT Manuale utente	LV Lietotāja rokasgrāmata	TG Дастури корбар
ES Manual del usuario	SK Príručka uživateľa	TK Ulanýjy gollanmasy
PT Manual do utilizador	RO Manual de utilizare	UZ Foydalanuvchi qo'llanmasi
RU Руководство пользователя	SL Uporabniški priročnik	HE מודעת לשימוש
KK Пайдаланушы нұсқаулығы	SR Korisnički priručnik	

PHILIPS and the Philips Shield Emblem are registered trademarks of Koninklijke Philips N.V. and are used under license. This product has been manufactured by and is sold under the responsibility of Versuni Holding B.V., and Versuni Holding B.V. is the warrantor in relation to this product.  
2023 © Versuni Holding B.V.  
4239.001.2344.3 (08/02/2023)





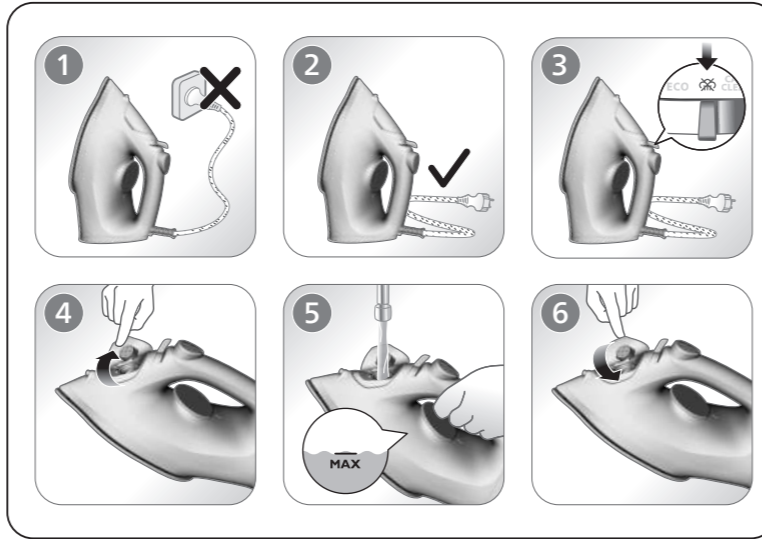
[www.philips.com/support](http://www.philips.com/support)



1



[www.philips.com/support](http://www.philips.com/support)



2



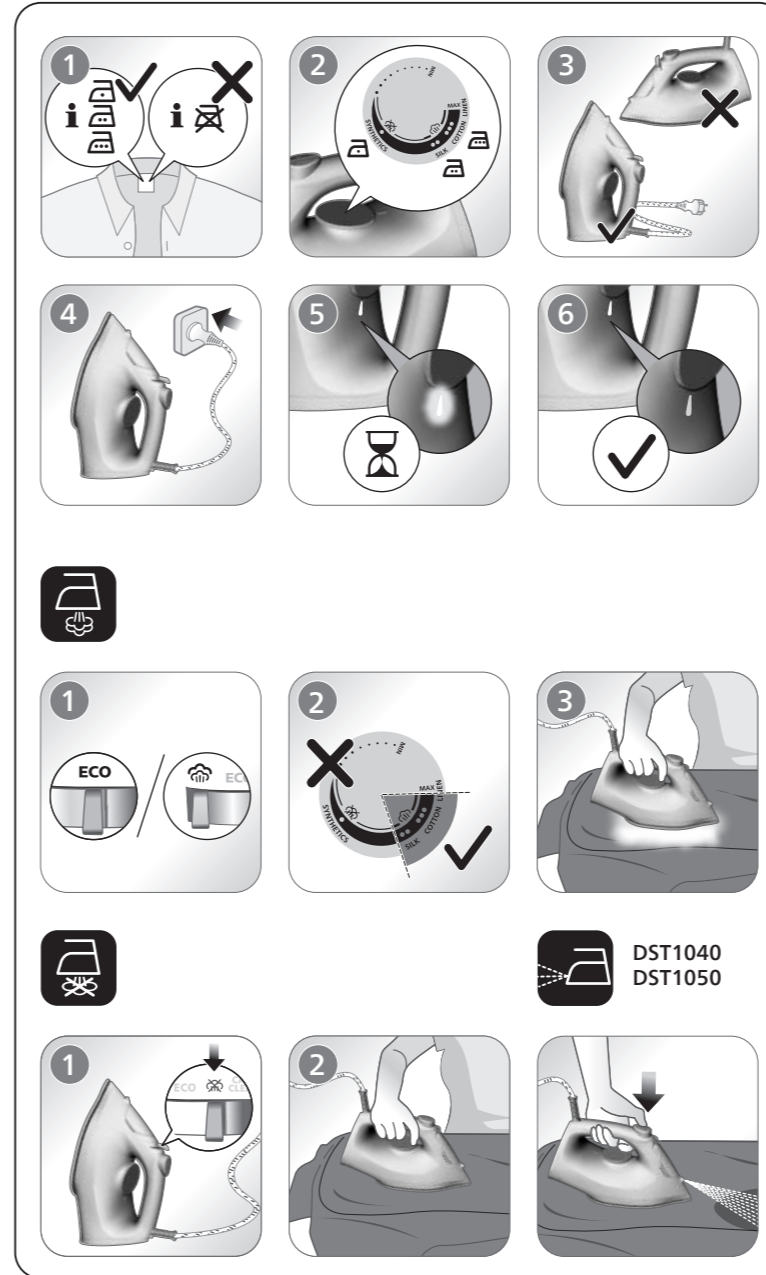
[www.philips.com/support](http://www.philips.com/support)

	MAX (MÁX) LINEN (LINO)	
	COTTON (ALGODÓN)	
	SILK (SEDA)	ECO
	SYNTHETICS (SINTÉTICOS)	

2



[www.philips.com/support](http://www.philips.com/support)



2



[www.philips.com/support](http://www.philips.com/support)

