



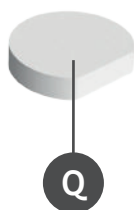
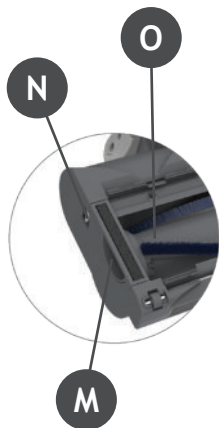
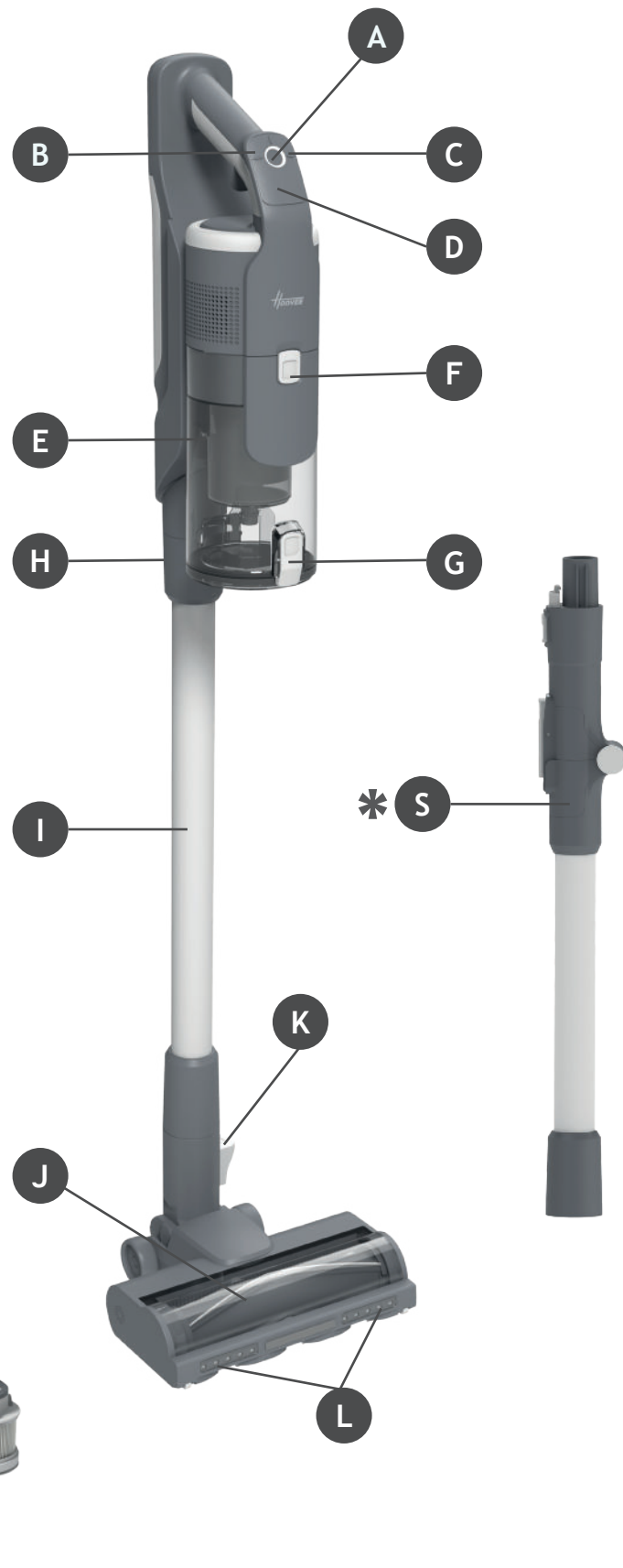
HF6

GB User Manual	2
FR Guide d'utilisation	14
DE Bedienungsanleitung	26
IT Manuale d'uso	38
NL Gebruikershandleiding	50
PT Manual de Instruções	62
ES Manual de usuario	74
DK Brugervejledning	86
NO Brukerhåndbok	98
SE Bruksanvisning	110
FI Käyttöohje	122
GR Οδηγίες Χρήσεως	134
RU Руководство пользователя	146
PL Instrukcja obsługi	158
CZ Návod k obsluze	170
SI Navodila Za Uporabo	182
TR Kullanım Kilavuzu	194
AR مدد ځستس مېلا لې لډ	206



PRODUCT COMPONENTS:

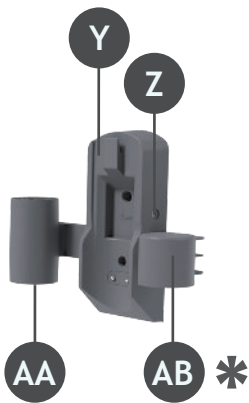
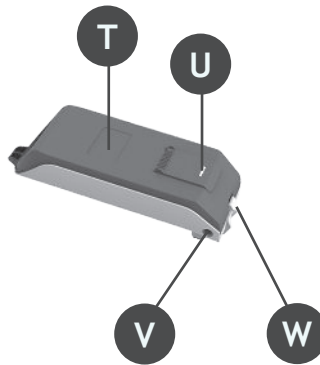
- A. ON/OFF Button
- B. "+" Mode Button
- C. "-" Mode Button
- D. LED display
- E. Dust Bin
- F. Bin Release Button
- G. Bin Flap Release Button
- H. Tube Release Button
- I. Tube
- J. Nozzle
- K. Nozzle Release Pedal
- L. Nozzle Front Led Lights
- M. Nozzle Brushbar Release Cover
- N. Nozzle Brushbar Slider
- O. Brush Bar
- P. Filter Frame
- Q. Sponge Filter
- R. Exhaust Filter
- S. Flexi Tube*



*Dependant on your model.

PRODUCT COMPONENTS:

- T. Battery Pack
- U. Battery Charging Light
- V. Battery Charging Inlet
- W. Battery Release Button
- X. Charger
- Y. Wall Mount
- Z. Wall Mount Charging Inlet
- AA. Wall Mount Hanger 1
- AB. Wall Mount Hanger 2*
- AC. Wall Mount Screws
- AD. Crevice Tool
- AE. 2in1 Dusting Brush
- AF. Motorised Pet Tool*



*Dependant on your model.

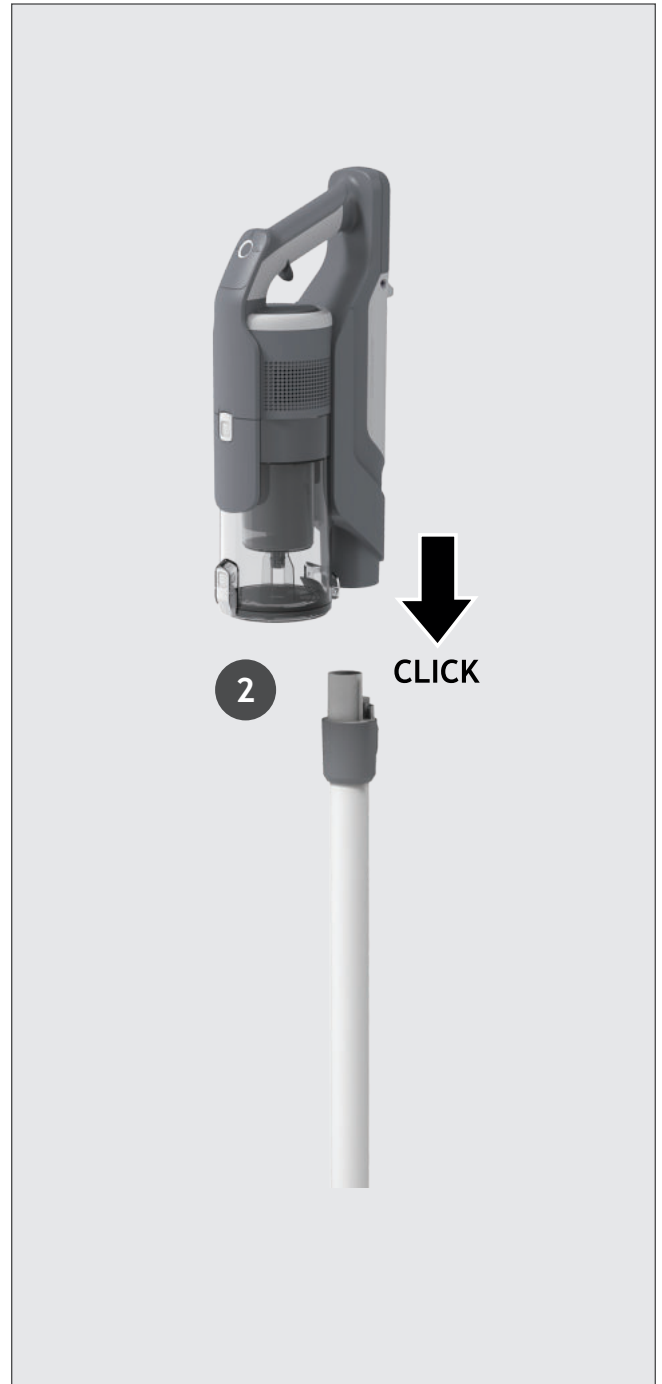
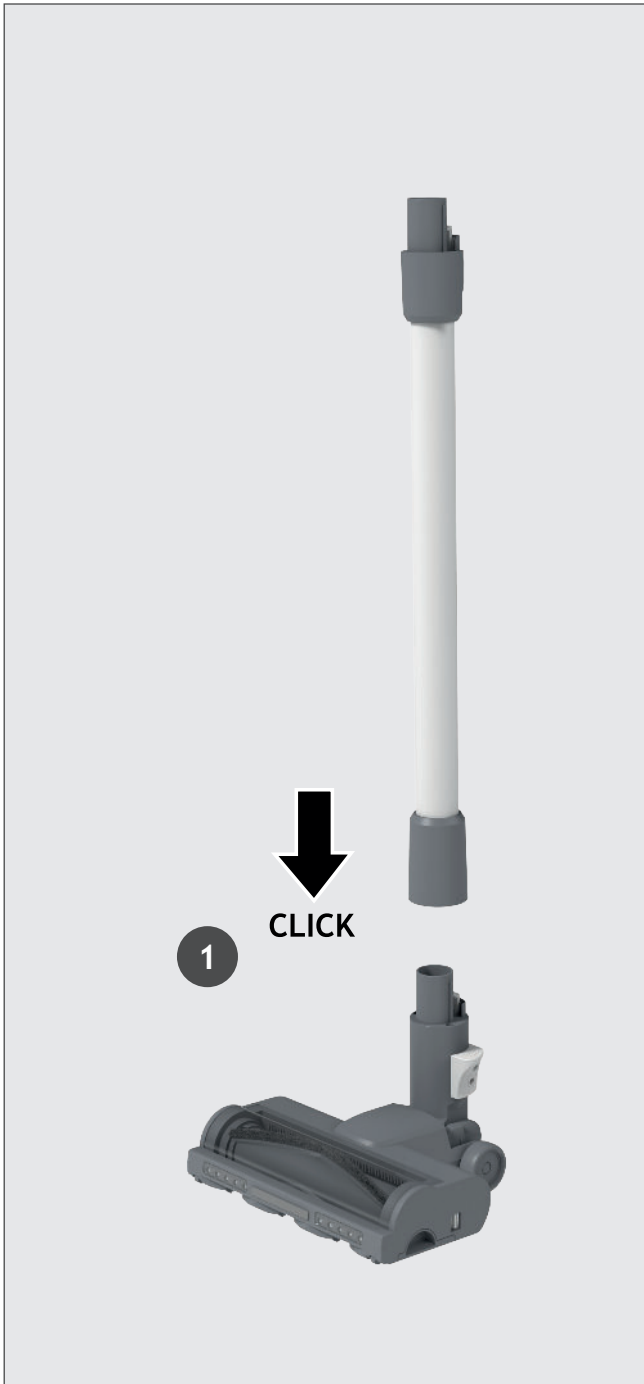
2. PREPARING YOUR CLEANER

GB

Remove all product parts from the packaging and assemble your cleaner.

STEP 1: Fit the tube into the floor nozzle.

STEP 2: Fit the handheld unit onto the tube.



2. PREPARING YOUR CLEANER

GB

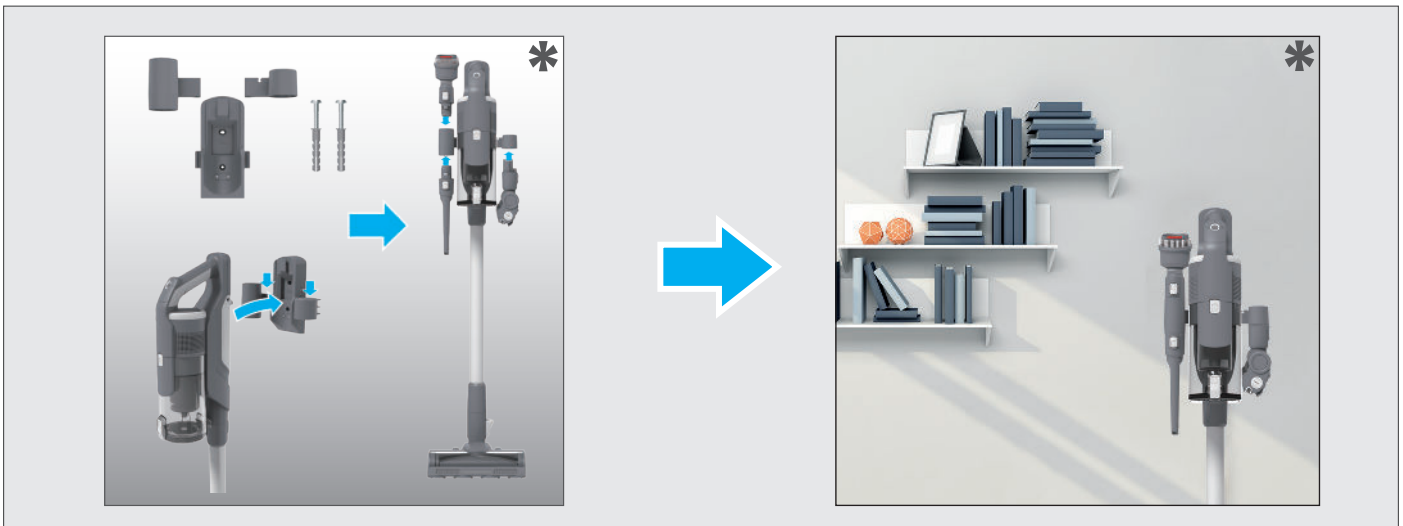
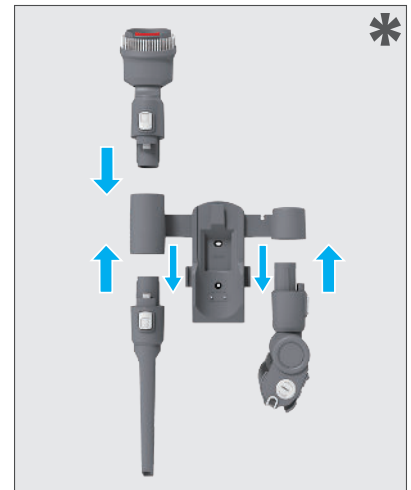
We provide a wall mount for optional storage. If you wish to use it please proceed to assembly. Attach the Hanger 1 to the Wall mount on the left side, slide it until you hear “click”.

*Dependant on your model you may also have a Hanger 2. Attach it to the wall mount on the right side, slide it until you hear “click”.

Fix the wall mount to the wall using the two screws provided.

All accessories can be attached to the wall mount. Attach them to the hangers until you hear it “click” into location.

Insert charger into charger inlet located on the wall mount to automatically charge your vacuum cleaner everytime you hang it on the wall mount.



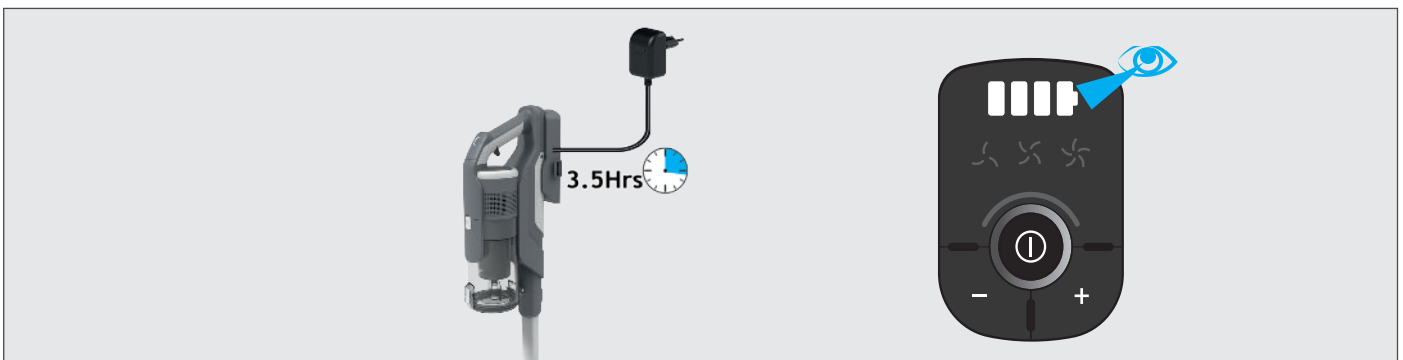
3. CHARGING THE BATTERY

The battery in your product does not come fully charged. Before first use, please charge it completely: this should take around 3.5 hours.

For your convenience, the battery can be charged in 3 different conditions.

1:With the product fully assembled in stick mode, the battery status will be indicated on the LED display.

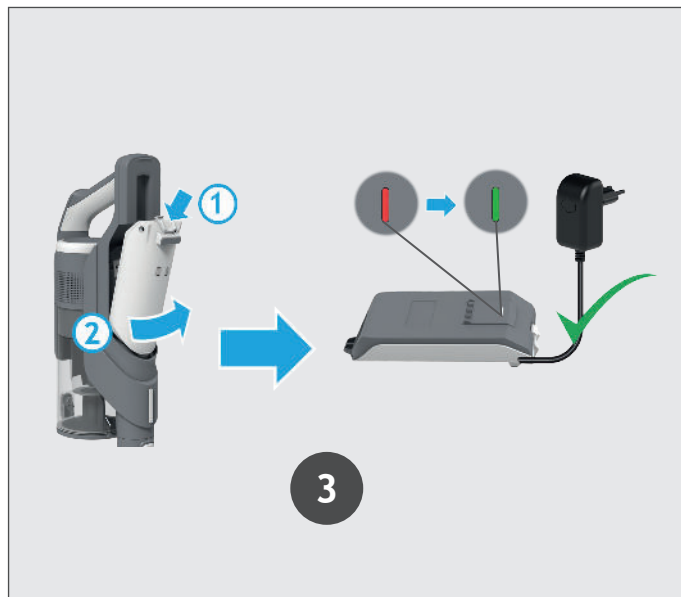
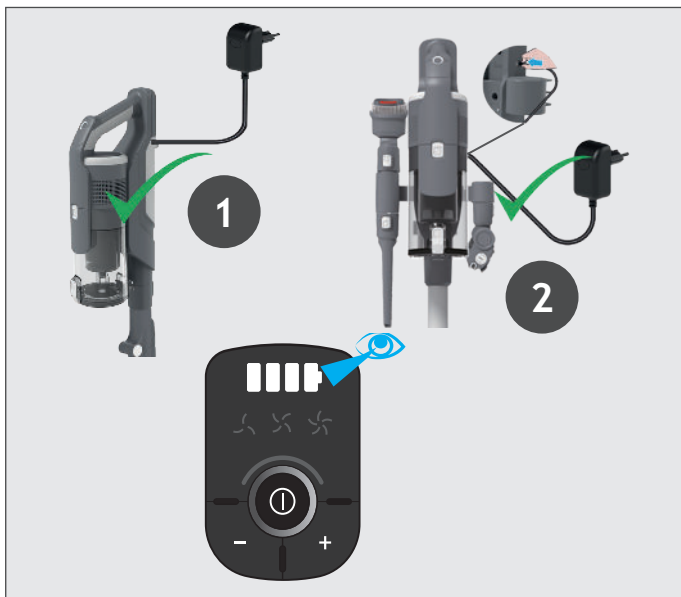
2:With the product fully assembled located on the wall mount, the battery status will be indicated on the LED display



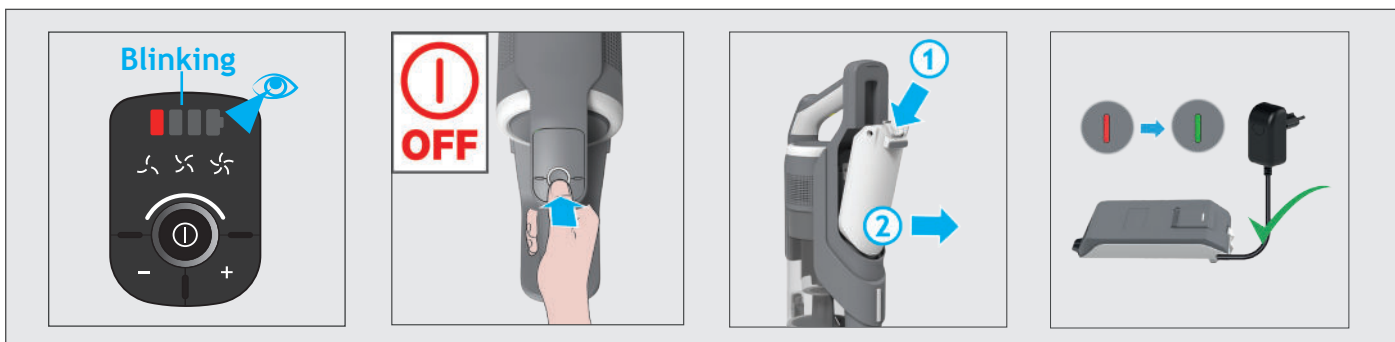
*Dependant on your model.

3: Remove the battery from the product by pressing the battery release buttons. Insert the battery charger jack to the battery. The battery pack LED will illuminate RED when charging. When charging is complete, the LED indicator will illuminate GREEN.

NOTE: It is normal for the charger to become warm to touch when charging. Use only the charger supplied with your product.



When using your product, the real time charge level of your battery is indicated on the LED display located on the handheld. When the remaining run time is reduced to 2 mins, a red icon displayed on the LED will start to flash. It is recommended that you turn off the product, remove the battery and charge it.



4. USING YOUR CLEANER

There are 3 different working modes for your cleaner:

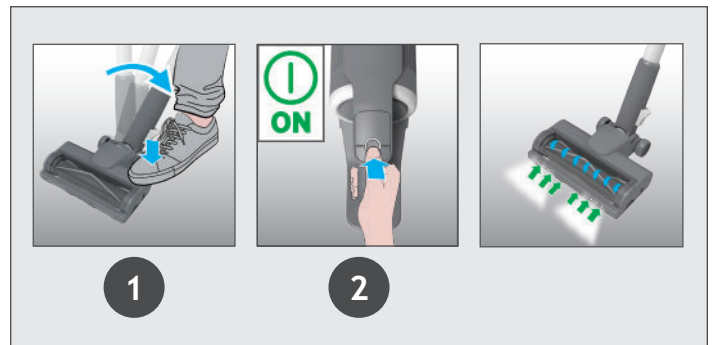
1. Stick mode.
2. Above Floor mode.
3. Handheld mode.



To use your product in Stick mode:

1. Place your foot on the nozzle and pull back to recline the tube.
2. Press the On/Off power button to begin cleaning.

NOTE: The brushbar is always rotating.

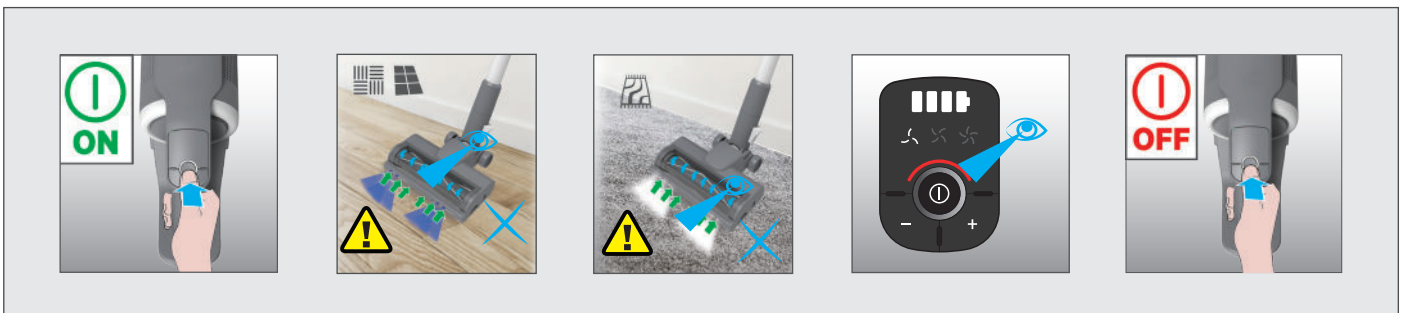


Floor sensor:

Your HF6 is equipped with a floor sense that automatically recognizes the type of floor you're vacuuming to adjust the power. When vacuuming a hard floor the LED lights on the nozzle will be white. When vacuuming a carpet the LED lights on the nozzle will be blue.



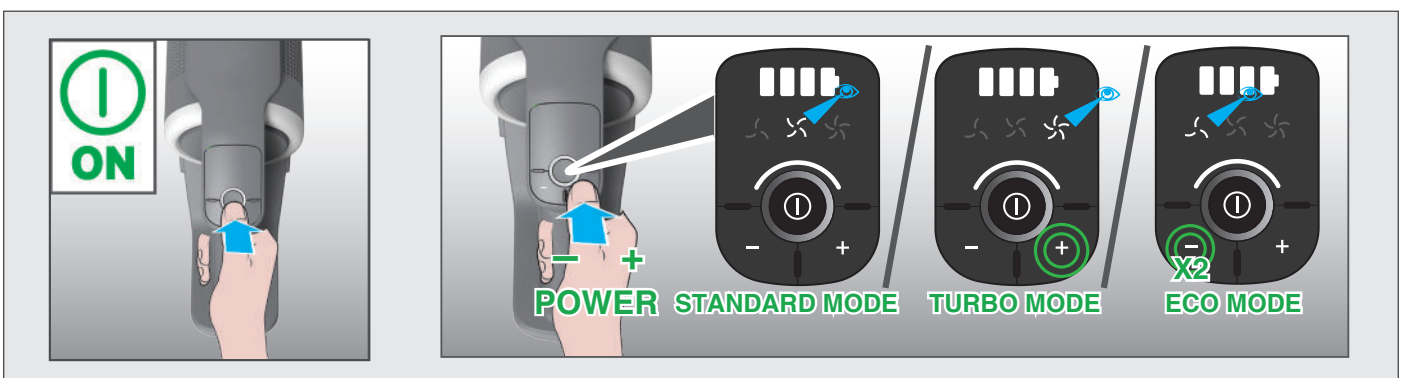
Once a malfunction occurs, the status bar on the LED display screen of the main unit will turn red and flash.



Control settings:

By pressing the “+” or “-” buttons you can easily switch between the three cleaning modes (STANDARD, TURBO,ECO) depending on the cleaning task.

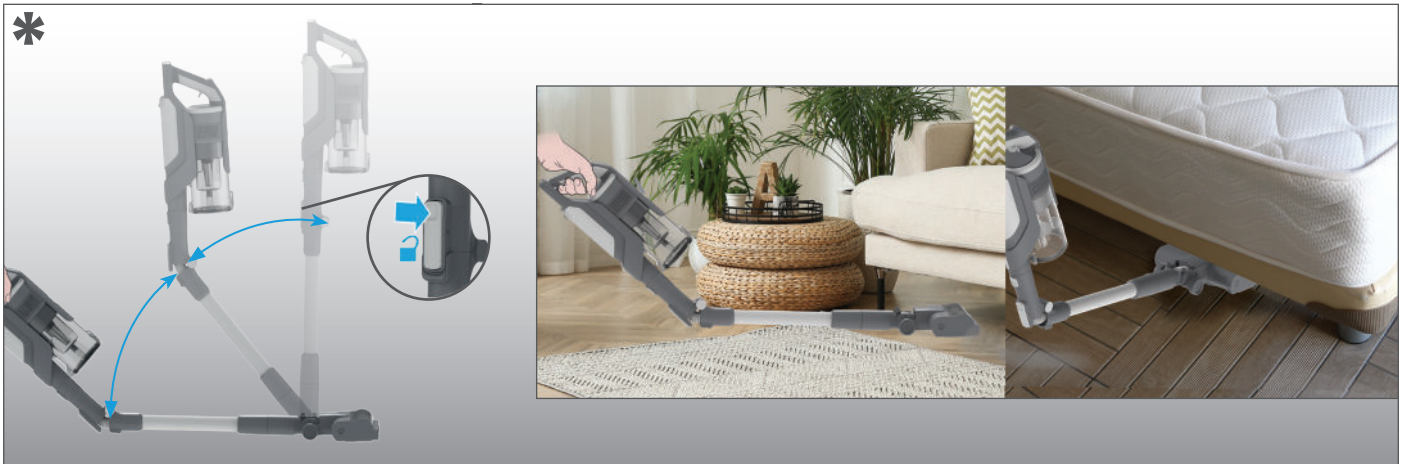
The corresponding icon will light up on the LED display screen to show you the current mode.



4.1.1 FLEXIBLE MODE*

GB

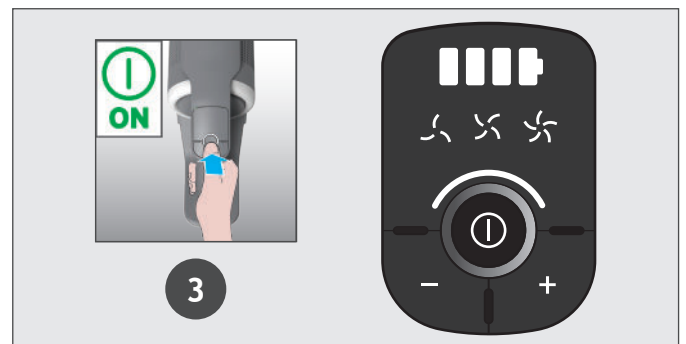
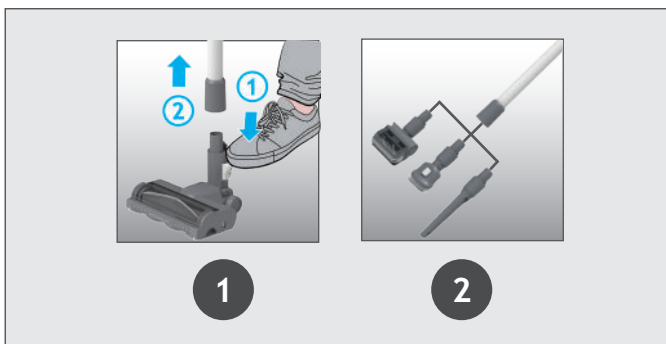
If you want to easily access hard-to-reach areas under furniture, press the flexible tube release button to position the tube to a lower angle.



4.2 ABOVE FLOOR / HANDHELD MODE

To use your product in Above Floor mode:

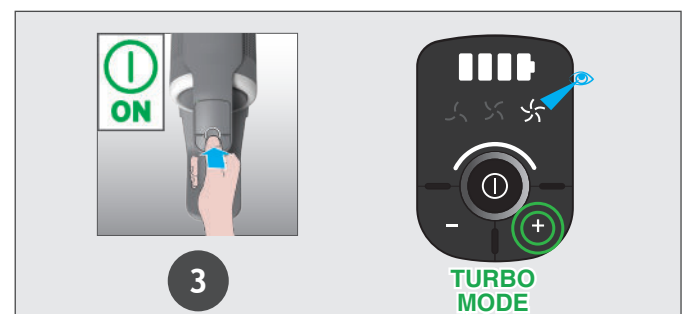
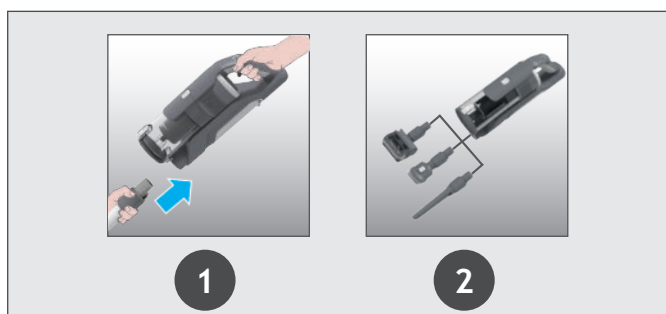
1. Remove the tube from the nozzle by pressing the nozzle release pedal and pull the tube from the floor nozzle.
2. Fit your desired accessory to the end of the tube. All of your available accessories will fit onto the end of the tube.
3. Press the On/Off power button to begin cleaning.



To use your product in handheld mode:

1. Remove the Handheld unit from the tube by pressing the handheld release button and pulling apart.
2. Fit your desired accessory to the end of the handheld unit. All of your available accessories will fit onto the end of the handheld unit.
3. Press the On/Off power button to begin cleaning.

NOTE: The product has memory feature and it will restart in its latest setting.



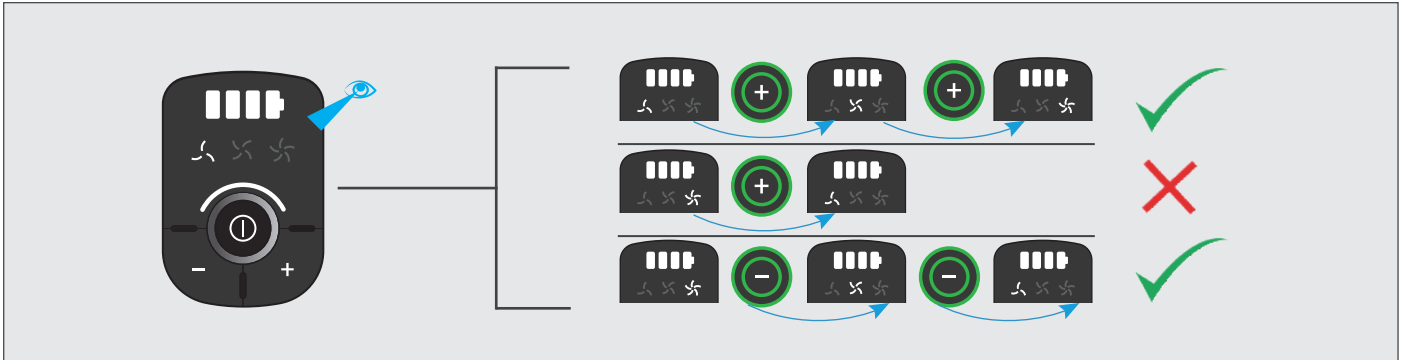
*Dependant on your model.

Control settings:

GB

By pressing the “+” or “-” buttons you can easily switch between the three cleaning modes (STANDARD, TURBO, ECO) depending on the cleaning task.

The corresponding icon will light up on the LED display screen to show you the current mode.



5. CLEANER MAINTENANCE

5.1 EMPTYING THE DUST BIN

When the debris in your dust bin reaches the max fill line, empty your bin.

1. Switch off your product.
2. Press the handheld release button and remove the handheld unit from the tube.
3. Hold the handheld unit over a bin and press the bin flap release button to open the flap and release the debris into the trash.
4. Close the bin flap.



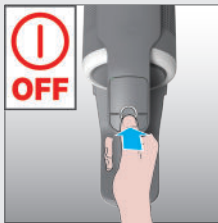
5. CLEANER MAINTENANCE

5.2 FILTERS

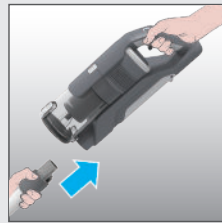
GB

IMPORTANT: For optimum performance, we recommend to wash the filters after every 5 bin empties.

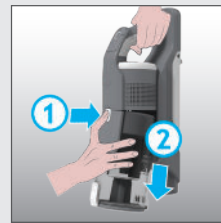
1. Ensure your product is switched off.
2. Press the handheld release button and remove the handheld unit from the tube.
3. Press the bin release button and remove the bin assembly from the handheld unit.
4. Remove the pre-motor filters from the bin and separate the foam filter.
5. Pull out the exhaust filter from the unit.
6. Remove any excess debris from the filters and wash all 3 filters using lukewarm water.
7. Leave to dry for 24hrs before refitting to your product.
8. Use the cleaning tool provided to remove any excess debris from inside the dust bin.
9. Re-fit the foam filter to the pre-motor filter and re-fit both of them into the bin.
10. Re-fit the exhaust filter to the handheld unit.
11. Re-fit the bin to the handheld unit.



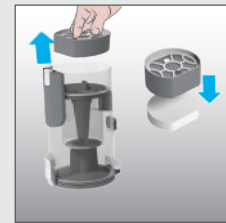
1



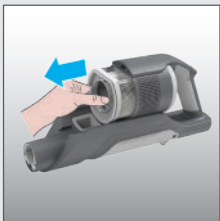
2



3



4



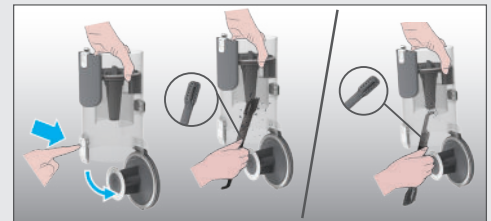
5



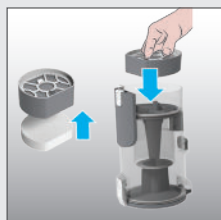
6



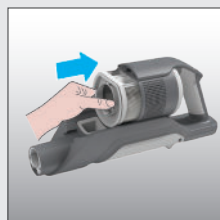
7



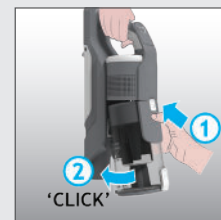
8



9



10



11

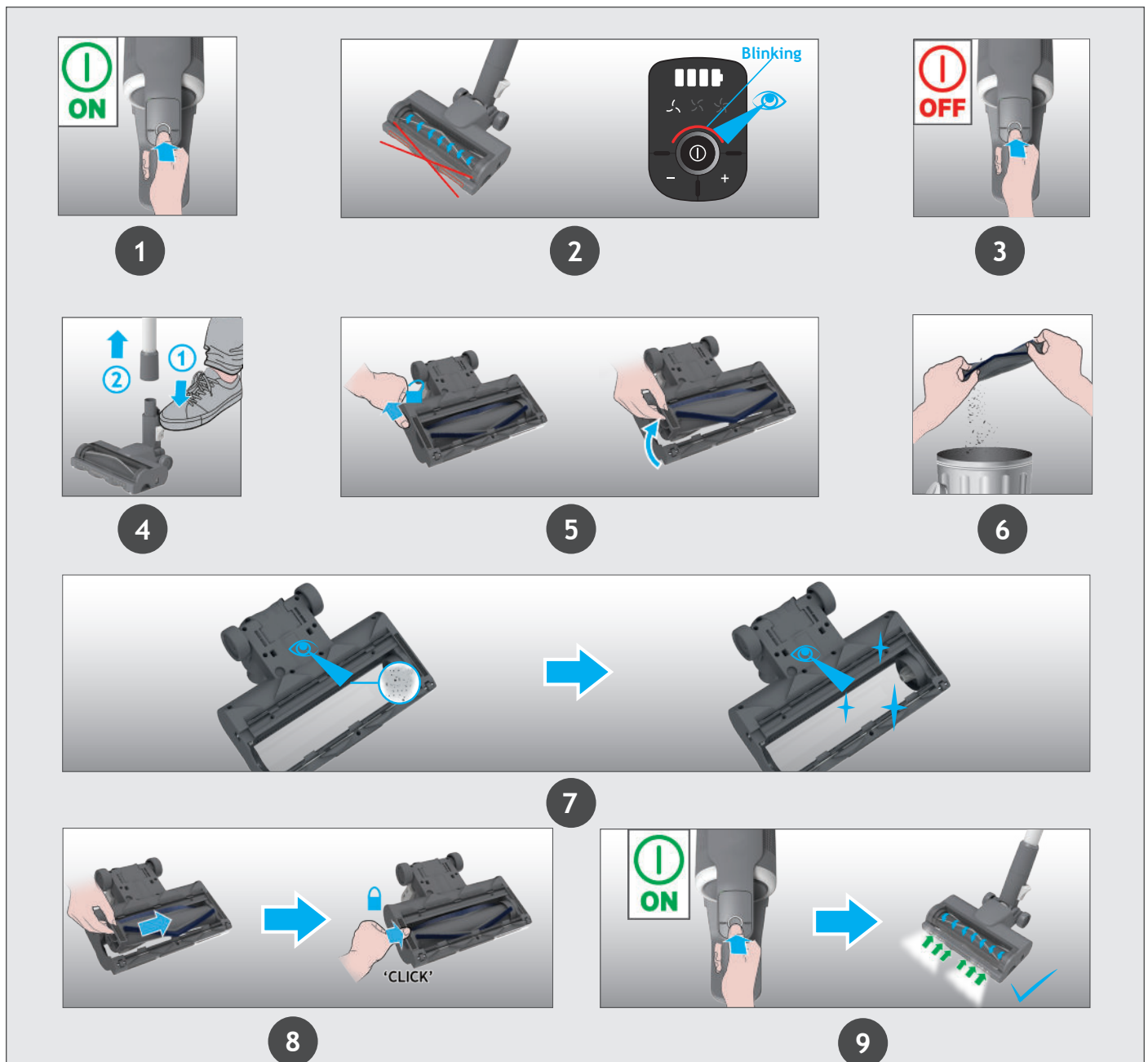
5. CLEANER MAINTENANCE

5.3 FLOOR NOZZLE

GB

Thanks to ANTI-TWIST, your Hoover vacuum features an integrated comb which reduces hair wrapping around the brushbar. However, if your cleaner is not picking up efficiently your brushbar may need to be cleaned.

1. Switch on your product.
2. If the agitator has a blockage, the agitator will stop rotating and status bar on the LED display will turn red and flash.
3. Switch off your product.
4. Press the nozzle release pedal.
5. Move the nozzle brushbar release slider to the left and pull out the agitator.
6. Remove any excess debris from the brushbar.
7. Check for and remove any large debris from inside the nozzle.
8. Re-insert the brushbar into the nozzle ensuring it is in the correct position and push down at the end of the brushbar until you hear it "CLICK" to lock in position.
9. After assembly is completed, press the power on button to continue cleaning.

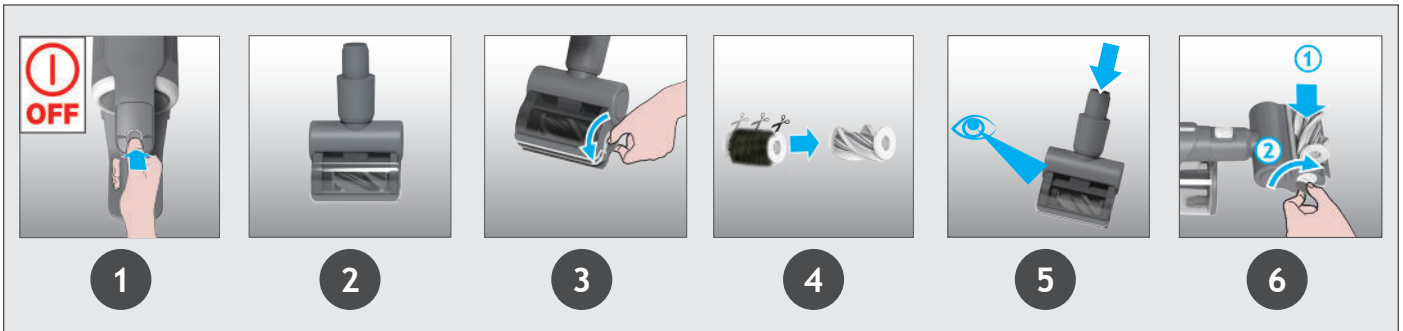


5. CLEANER MAINTENANCE

5.4 MOTORISED PET TOOL*

GB

1. Switch off your product.
2. Remove the motorised pet tool from your product.
3. Using a coin, open the brushbar release lock and remove the brush bar.
4. Using scissors, remove any tangled fibres or debris from the brushbar.
5. Look inside the nozzle and remove any debris.
6. Refit the brushbar and using a coin, lock into position.



5. CLEANER MAINTENANCE

5.5 BLOCKAGES

If your product is still working but has low or no suction, you may have a blockage. Carry out all maintenance instructions included in sections, 5.1, 5.2, 5.3, 5.4.

The following additional areas of your product should also be checked for any debris or blockages:

1. Switch off your product.
2. Separate the Floor nozzle, tube and handheld unit as per previous instructions.
3. Remove the brushbar and check the nozzle inlet area for any debris or obstructions and clean it.
4. Position the nozzle neck vertically and visually check for any debris or obstructions and clean it.
5. Visually check the handheld inlet connection area for any debris or obstructions and clean it.
6. Visually check both ends of the tube and remove any debris or obstructions.

Re-Assemble your product.



*Dependant on your model.

Should you have any problem with you cleaner, follow this simple check list before calling the Hoover Customer Service Centre.

A. Cleaner does not switch on.

Check if the cleaner is charged.

Check if the battery pack is assembled in place.

B. If a red light appears on the battery charging indicator.

Remove any excess debris from the brush bar and any tangled debris from the comb

C. Cleaner stop working.

Check if there is an obstruction in air inlet or in the tube, clear it and ensure the product is OFF.

Once this is done simply press the on/off button, the product will start working again.

D. The status bar on the LED display is flashing red.

There is a blockage in the nozzle or an obstruction into the brush bar. Ensure your product is switched OFF and remove any debris or obstruction and following cleaner maintenance 5.3.

E. The floor sensor is damaged

If the LED lights on the nozzle are not working (they appear to be blue on hard floor and white on carpet), clean the whole nozzle with a cloth. If the problem persist, contact customer service.

F. Batteries cannot be charged.

This may be a result of very long storage periods (over half year).

Contact Hoover customer service to arrange battery replacement.

If the problem persists, contact the Hoover customer service center.

G. Main motor failure.

In case of these malfunctions, please contact customer service.

Disposal of the packing material

The Packaging is designed to protect the appliance from damage during transportation. The packaging materials used are selected from materials which are environmentally friendly for disposal and should be recycled.

Recycling the packaging reduces the use of raw materials in the manufacturing process and also reduces the amount of waste in landfill sites

Replacing and disposing the Batteries

This cleaner is fitted with a rechargeable lithium-ion battery pack which is replaceable.

WARNING: Only use approved replacement parts for your cleaner. Using parts not validated by Hoover are dangerous and will invalidate your guarantee.

WARNING: Do not try to open the battery pack and repair it by yourself.

1. Press the battery release buttons and pull the battery outside.

2. Removed the old battery pack and replace with the new battery pack.

3. Dispose of the batteries safely. Used batteries should be taken to a recycling station and not disposed of with household waste.

HOOVER SPARES AND CONSUMABLES

Always replace parts with genuine Hoover spares. These are available from your local Hoover dealer or direct from Hoover.

When ordering parts always quote your model number.

YOUR GUARANTEE

The guarantee conditions for this appliance are as defined by our representative in the country in which it is sold. Details regarding these conditions can be obtained from the dealer from whom the appliance was purchased. The bill of sale or receipt must be produced when making any claim under the terms of this guarantee.