

PHILIPS



Philips 3000 Series Philips Kettle

HD9411/70

- Explore the full Breakfast set 3000 Series
- Various dishes to any hot drinks, made your way
- Refined design, a modern touch to any kitchen

Enjoy hot water. Everyday, in style.

Hot drinks and dishes, always prepared your way.

- Full breakfast set available with toaster and coffee maker
- Ample 1.7 L capacity for the whole family
- Quick boil and easy clean thanks to flat heating element
- Safely boil water anytime with boil-dry protection
- Lighted window to easily see water level, even from afar
- Easily use a hand to open and refill with lid release button
- Mobility with Cordless kettle and 360° pirouette base
- Scale-free water everytime with removable filter
- Lighted on/off switch indicates at a glance

Explore the full Breakfast set 3000 Series, Various dishes to any hot drinks, made your way, Refined design, a modern touch to any kitchen

HD9411/70

Highlights

Full breakfast set available



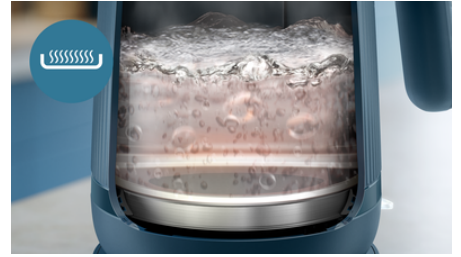
Explore our full 3000 Series breakfast set with matching toaster and drip coffee maker. Designed to start your day in style!

1.7 L capacity



From brewing tea to preparing dinner, the ample 1.7 L kettle capacity is family sized for everyone to enjoy.

Flat heating element



The flat, stainless steel heating element is concealed for fast boiling and effortless cleaning. Keep water fresh and clean before, during, and after every use.

Boil-dry protection



Don't worry about a thing. The boil-dry mechanism prevents overheating by automatically shutting the kettle off when your water is ready, or when there's no water left inside.

Lighted window



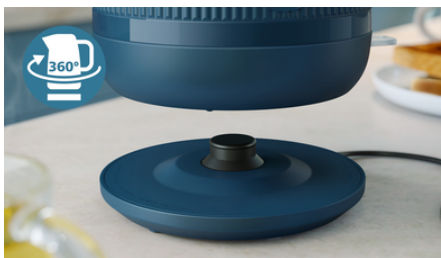
The lighted window is a fun and stylish touch to fill exactly the amount of water you need. Save time, water and energy every time you boil.

Lid release button



Opening the kettle lid for refilling is simple and intuitive with a button located conveniently on the handle. Either you're left or right-handed, simply pop the lid and hold under the tap to refill water, all with just one hand.

360° pirouette base



Moving the kettle around is as easy as placing it back to the base from any angle, thanks to the cordless kettle and its 360° pirouette base.

Removable filter



Every drop is free from impurities and water scale. Simply remove the filter and rinse clean anytime.

Lighted on/off switch



The on/off switch lights up when the kettle is working and shuts off to see when you're ready to pour.

Specifications

Weight and Dimensions

Package Length: 18.5 cm
Package Height: 26 cm
Product Height: 24.8 cm
Product Weight: 1010 g
Package Width: 24 cm
Product Width: 25.22 cm
Product Length: 15.6 cm
Package Weight: 370.7 g

Safety feature

Automatic shut-off: Yes

Technical Specifications

Power: 1850-2200 W
Battery Product: No
Voltage: 220-240 V
Frequency: 50-60 Hz

General Specification

Capacity Watertank: 1.7 l
Primary Material: Plastic
Warranty: 2 years

Country of Origin

Produced In: China

